

LEADING THROUGH CRISIS



COVID-19 COMMUNITY CARE *Chapter III*
(Equip Vital Goods & Sanitary Gears)



Photo by: Gogon Journey

Contents

June - July 2020

Background 6

As the Foundation, response quickly and keep adapting amid COVID-19

Aims 8

Creating synergies by encouraging them to adapt and rebuild normality

Output 10

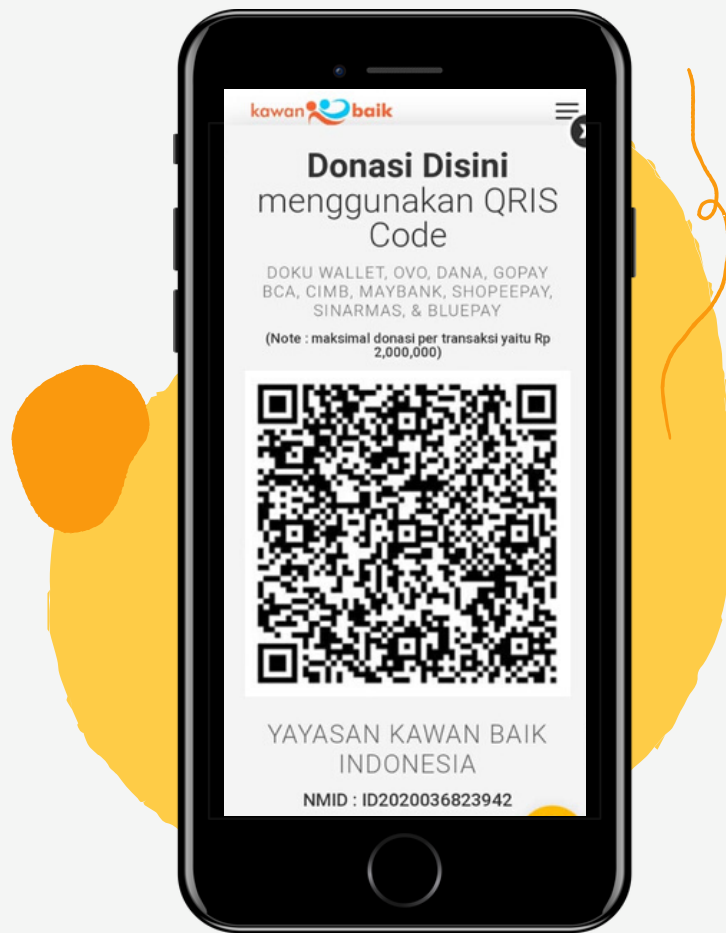
The role of the foundation in handling disasters and providing disaster recovery assistance in synergy with all levels of the community in several primary aspects of life.

CCC

Chapter III

Kawan Baik Indonesia Foundation, Fair Future Indonesia, and Rumah Sanur Creative HUB provide and distribute healthy food and health equipment to prevent the transmission of Coronavirus to the community over the effects of the COVID-19 pandemic.





Donate Here

<https://www.kawanbaikindonesia.org/doku-kbi/>

OR

<https://actionforfairfuture.org/give-life/>

BANK TRANSFER:

Permata Bank
yayasan kawan baik indonesia
no. ac. 1224093140
kode transfer (013)

BACKGROUND



Kawan Baik Indonesia Foundation, Fair Future Foundation, and Sanur Creative HUB House worked together during the pandemic at COVID-19 Community Care #kawanbaikberbagi since early March 2020 to provided of healthy foods, vitamins, masks and hand sanitizers to communities in Bali and Sumba

The Regional Government issued a Community Activity Restricting Regulation (PKM) on the 3rd of April 2020, which is equivalent to the closure of a part of the island or PSBB on a national scale. This special moment required offices, schools, markets, places of worship and public spaces to be closed. Practically the majority of activities outside the home are abolished but the suggestion of working at home or Work from Home (WFH) cannot be applied in some economic sectors and requires some people to continue their activities outside.

The steps to suppress the spread of the virus carried out on public awareness and the level of compliance with government appeals can lessen the rate of spread of the virus in Bali. After 3 months of PKM implementation, pushing back to the normal transition period to meet the needs of clothing and food. The fact that is confronted is that when people do activities outside the home, they wear face masks, hand sanitisers, or wash their hands and keep a safe distance from each other. The new policy allows all businesses, including food stalls, restaurants, malls, traditional markets, and grocery stores, to keep operating and other social activities normal.



Kawan Baik Indonesia takes the role of a social foundation, continuing in the social response helping the Government to meet the needs of food and health supplies to prevent transmission of the virus. Another role is to assist and encourage the community to return to activities and fulfil primary needs during the pandemic. Collaborated with **Kunang Jewelry** and **to~ko Concept Store** to involve vulnerable groups in the Denpasar Women's Penitentiary to participate in sewing masks that would later be used to fill Goodie Bags by COVID-19 Community Care Chapter III Friends of Good Friends.



Aims

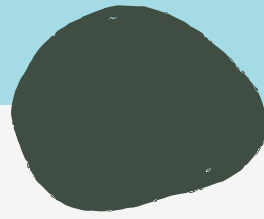
The aims of this Chapter III Community Care COVID-19, are follows:

- ✓ Involve and assist vulnerable groups of people who are in the Prison's Denpasar to participate in making Coronavirus prevention equipment in the form of layered cloth masks that are safe and comfortable to use during activities
- ✓ Providing opportunities for vulnerable communities in Denpasar Women's Penitentiary to get income from collaborative mask-making activities,
- ✓ Providing opportunities for vulnerable communities in the Denpasar Women's Penitentiary to obtain skills assistance and improve the quality of mask production
- ✓ Meeting the primary needs of nutritious, nutritious and essential body food ingredients consumed during the Corona epidemic for people in Bali and Sumba,
- ✓ Assisting vulnerable communities (disabled) in Bali in the form of primary and special needs according to their needs while at the community home

- ✓ Providing health equipment that is used by the community during their activities back to normal outside the home using a mask and armed with a hand sanitiser
- ✓ Provide opportunities to participate as helpers and volunteers who want to participate in #KawanBaikBerbagi social activities
- ✓ Providing opportunities to participate in catering/stalls that operate normally to provide food for volunteers
- ✓ Supporting the local economy by buying groceries, vegetables, and other micro-businesses to be able to continue business activities (supplying the needs of #KawanBaikBerbagi).

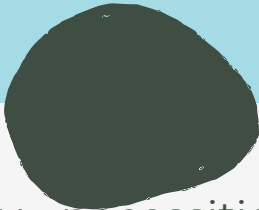


Output



- Vulnerable communities in the Denpasar Women's Penitentiary are involved in overcoming the Coronavirus epidemic by producing masks that are safe and comfortable,
- Vulnerable communities in Denpasar Women's Penitentiary receive income from the production of masks, this income data supports the fulfilment of needs while in prison,
- The assistance provided by Kawan Baik Indonesia and collaborators in Kunang Jewelry and To~Ko Concept Store produced a neat and comfortable mask to wear during activities. The added value taught is about the quality produced and time management,
- Supplying healthy food needs, cleaning supplies, and sanitary napkins as well as free equipment (masks and hand sanitisers) that can meet the needs during the crisis to the people in Bali and Sumba.



- 
- Supplying healthy necessities, free cleaning supplies, and sanitary napkins as well as supplies (masks and hand sanitisers) that can meet the needs during the crisis to the needy people and vulnerable and disabled groups in Bali,
 - Equipping the community of health equipment during activities outside the home with masks and hand sanitisers,
 - Motivate people to make rhythm adjustments back to normal activities with health standards while adhering to social volunteer activities to help prepare Goodie Bags #KawanBaikBerbagi,
 - Cooperate with catering/stalls to provide lunch for volunteers during activities, and
 - Supplying healthy food needs, cleaning supplies, and sanitary napkins as well as free equipment (masks and hand sanitisers) that can meet the needs during the crisis to the needy communities and vulnerable groups in Bali and Sumba.



Bali

No	Item	Price	Consumption	Price	Periode	Total	Total
BENEFICIARIES : PUBLIC = 300 FAMILIES							
A.	MATERIALS AND ACTIVITIES		Quantity	Unit	Per-Bag	Times	Packages
1	Rice	IDR 14.080	2	KG	IDR 28.160	3	100
2	Sugar	IDR 19.800	0,5	KG	IDR 9.900	3	100
3	Cooking Oil	IDR 17.050	0,5	LITER	IDR 8.525	3	100
4	Egg	IDR 2.420	10	BUTIR	IDR 24.200	3	100
5	Veggie Packages	IDR 16.500	1	PAX	IDR 16.500	3	100
6	Egg Noodles	IDR 11.000	1	PAX	IDR 11.000	3	100
7	Protamil	IDR 5.500	1	PAX	IDR 5.500	3	100
8	Proteina	IDR 13.200	1	PAX	IDR 13.200	3	100
9	Soap	IDR 5.500	2	PCS	IDR 11.000	3	100
10	Sanitary Pad	IDR 11.000	1	PCS	IDR 11.000	3	100
11	Supplement / Vitamin	IDR 11.000	1	PAX	IDR 11.000	3	100
12	Mask	IDR 11.527	1	PCS	IDR 11.527	3	100
13	Hand Sanitizer	IDR 7.540	1	PCS	IDR 7.540	3	100
	Sub-Total				IDR 169.052		IDR 50.715.500
BENEFICIARIES : DIFABLE COMMUNITIES = 300 FAMILIES							
B.	MATERIALS AND ACTIVITIES						
1	Rice	IDR 14.080	2	KG	IDR 28.160	3	100
2	Sugar	IDR 19.800	0,5	KG	IDR 9.900	3	100
3	Coffee	IDR 28.600	1	PAX	IDR 28.600	3	100
4	Cooking Oil	IDR 17.050	0,5	LITER	IDR 8.525	3	100
5	Egg	IDR 2.420	10	PCS	IDR 24.200	3	100
6	Veggie Packages	IDR 16.500	1	PAX	IDR 16.500	3	100
7	Tempe	IDR 5.500	1	PAX	IDR 5.500	3	100
8	Soap	IDR 5.500	2	BOX	IDR 11.000	3	100
9	Sanitary Pad	IDR 11.000	1	BOX	IDR 11.000	3	100
10	Supplement / Vitamin	IDR 11.000	0,5	PAX	IDR 5.500	3	100
12	Mask	IDR 11.527	1	PCS	IDR 11.527	3	100
13	Hand Sanitizer	IDR 7.540	1	PCS	IDR 7.540	3	100
	Sub-Total				IDR 167.952		IDR 48.123.500
B.	OTHER MATERIALS & TOOLS						
1	Goodie Bag	IDR 9.350	1	PCS	IDR 9.350	1	600
2	Transport for Goodie Bags Delivery	IDR 11.000	1	RIDE	IDR 11.000	6	100
	Sub-Total				IDR 20.350		IDR 12.210.000
C.	OPERATIONALS						
1	Meals for Volunteer	IDR 25.000	15	PEOPLE	IDR 375.000	12	1
2	Project Coordinators Fees	IDR 2.000.000	1	PEOPLE	IDR 2.000.000	1	1
3	Manager Fees	IDR 750.000	1	PEOPLE	IDR 750.000	1	1
4	Logistic Fees	IDR 500.000	1	PEOPLE	IDR 500.000	1	1
5	Documentation (Photos and Videos) fees	IDR 300.000	2	PEOPLE	IDR 600.000	6	1
6	Executor fees	IDR 100.000	5	PEOPLE	IDR 500.000	6	1
7	Cleaning	IDR 100.000	1	PEOPLE	IDR 100.000	12	1
8	Operational KBI	IDR16.500.000	1	TIME	IDR 16.500.000	1	1
9	Local Permit	IDR 1.000.000	1	TIME	IDR 1.000.000	1	1
10	Transport for purchasing and delivery materials	IDR 1.500.000	1	TIME	IDR 1.500.000	1	1
	Sub-Total				IDR 57.583		600
	TOTAL				IDR 246.985		IDR 145.599.000
(%)	Materials & Activities Cost						76%
(%)	Operational Cost						24%

Sumba

No	Item	Price	Consumption		Price	Periode	Total	Total
A.	MATERIALS AND ACTIVITIES		Quantity	Unit	Per-Bag	Days	Packages	
1	Rice	IDR 14.300	2	KG	IDR 28.600	2	100	IDR 5.720.000
2	Sugar	IDR 22.000	0,5	KG	IDR 11.000	2	100	IDR 2.200.000
3	Cooking Oil	IDR 19.800	0,5	LITER	IDR 9.900	2	100	IDR 1.980.000
4	Egg	IDR 2.420	10	BUTIR	IDR 24.200	2	100	IDR 4.840.000
5	Soap	IDR 5.500	2	PCS	IDR 11.000	2	100	IDR 2.200.000
6	Tooth Paste	IDR 7.150	1	PCS	IDR 7.150	2	100	IDR 1.430.000
7	Sanitary Pad	IDR 11.000	1	PCS	IDR 11.000	2	100	IDR 2.200.000
8	Sereals	IDR 11.000	1	PAX	IDR 11.000	2	100	IDR 2.200.000
9	Biscuits	IDR 13.200	1	PAX	IDR 13.200	2	100	IDR 2.640.000
	Sub-Total				IDR 127.050			IDR 25.410.000
B.	OTHER MATERIALS & TOOLS FROM BALI							
1	Hand Sanitizer	IDR 7.540	1	PCS	IDR 7.540	2	100	IDR 1.508.000
2	Supplement / Vitamin	IDR 11.000	1	PAX	IDR 11.000	2	100	IDR 2.200.000
3	Mask	IDR 11.527	1	PCS	IDR 11.527	2	100	IDR 2.305.333
4	Flyer	IDR 1.100	1	PCS	IDR 1.100	2	100	IDR 220.000
5	Goodie Bag	IDR 8.800	1	PCS	IDR 8.800	2	100	IDR 1.760.000
6	Transport Cost from Bali to Sumba	IDR 5.500	1	RIDE	IDR 5.500	2	100	IDR 1.100.000
	Sub-Total				IDR 45.467			IDR 9.093.333
C.	OPERATIONALS							
1	Meals for Volunteer	IDR 25.000	15	PEOPLE		4	1	IDR 1.500.000
2	Project Coordinators	IDR 500.000	1	PEOPLE		1	1	IDR 500.000
3	Admin and Logistic	IDR 250.000	2	PEOPLE		1	1	IDR 500.000
4	Documentation (Photos and Videos) fees	IDR 500.000	1	PEOPLE		4	1	IDR 2.000.000
5	Executor Fees	IDR 100.000	6	PEOPLE		2	1	IDR 1.200.000
6	Transportation - Delivery	IDR 1.000.000	1	TIME		2	1	IDR 2.000.000
7	Cleaning	IDR 100.000	1	PEOPLE		2	1	IDR 200.000
8	Local Permit	IDR 500.000	1	TIME		1	1	IDR 500.000
	Sub-Total				IDR 42.000			IDR 8.400.000
	TOTAL				IDR 214.517			IDR 42.903.333
(%)	Materials & Activities Cost							80%
(%)	Operational Cost							20%

in Total

No	CCC Chapter III	Total Goodie Bags	Unit	Total
1	COVID-19 Community Care Chapter III Sumba	200	Packages	IDR 42.903.333
2	COVID-19 Community Care Chapter III Bali - Public	600	Packages	IDR 145.599.000
	TOTAL AMOUNT	800	Packages	IDR 188.502.333

Beneficiaries

200

- Vulnerable East Sumba Communities

258

- Rumah Berdaya Denpasar
- D-Network Denpasar
- Pertuni Bali
- Gerkatin Bali
- Yayasan Peduli Kemanusiaan Bali (YPK)

342

- Vulnerable Bali Communities



Skill Training



Goods Supply



Teammate Empowering the Denpasar Women Prisoners



The Benefactors



Our Steps

June - July 2020



Step 1

08 June

Start making masks with Denpasar Women Prisoners for 600 pieces with Kunang Jewelry and to~ko Concept Store



Step 2

15 June

Start collecting data of the beneficiaries in Bali and Sumba



Step 3

02 July 2020

Collecting supplier data base and material price to prepare the order



Step 4

06 July

Purchasing the material and open
volunteery registration



Step 5

10 July

Making the goodie bags in Rumah Sanur
from 10am - 2pm



Step 6

14 July

Start the delivery of Goody Bags
14 - 17 - 21 - 24 - 28 - 31



Step 7

4 August

Evaluation and Report

Get in touch
with us

Donation Link:

<https://actionforfairfuture.org/give-life/>

Or



YAYASAN KAWAN BAIK
INDONESIA

(+62) 818 0440 0818

info@kawanbaikindonesia.org
info@fairfuturefoundation.org

www.kawanbaikindonesia.org
www.actionforfairfuture.org