



Sumba HQ

Initial Concept

Kawangu, Sumba Timur - NTT



Study

Site

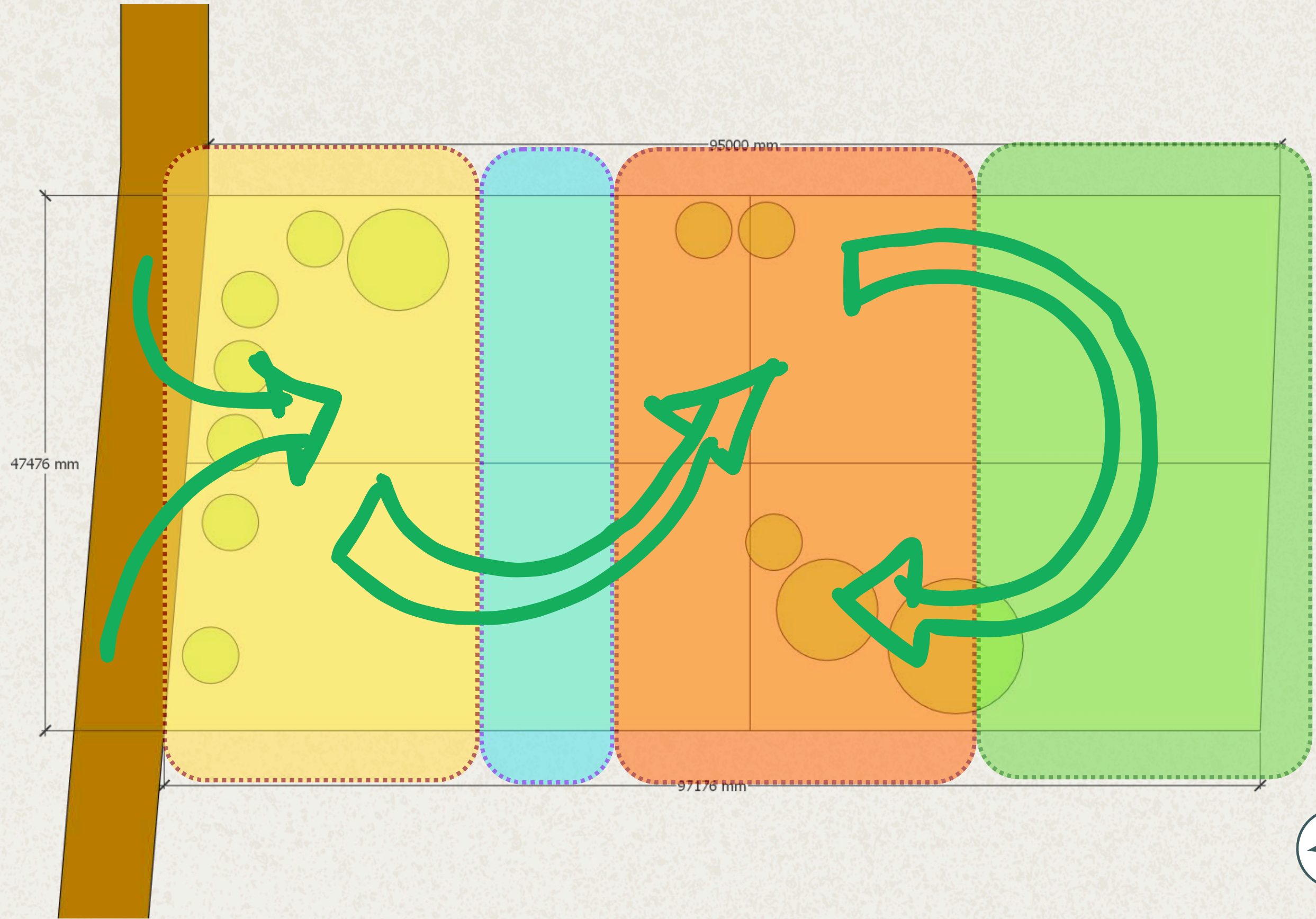


Location

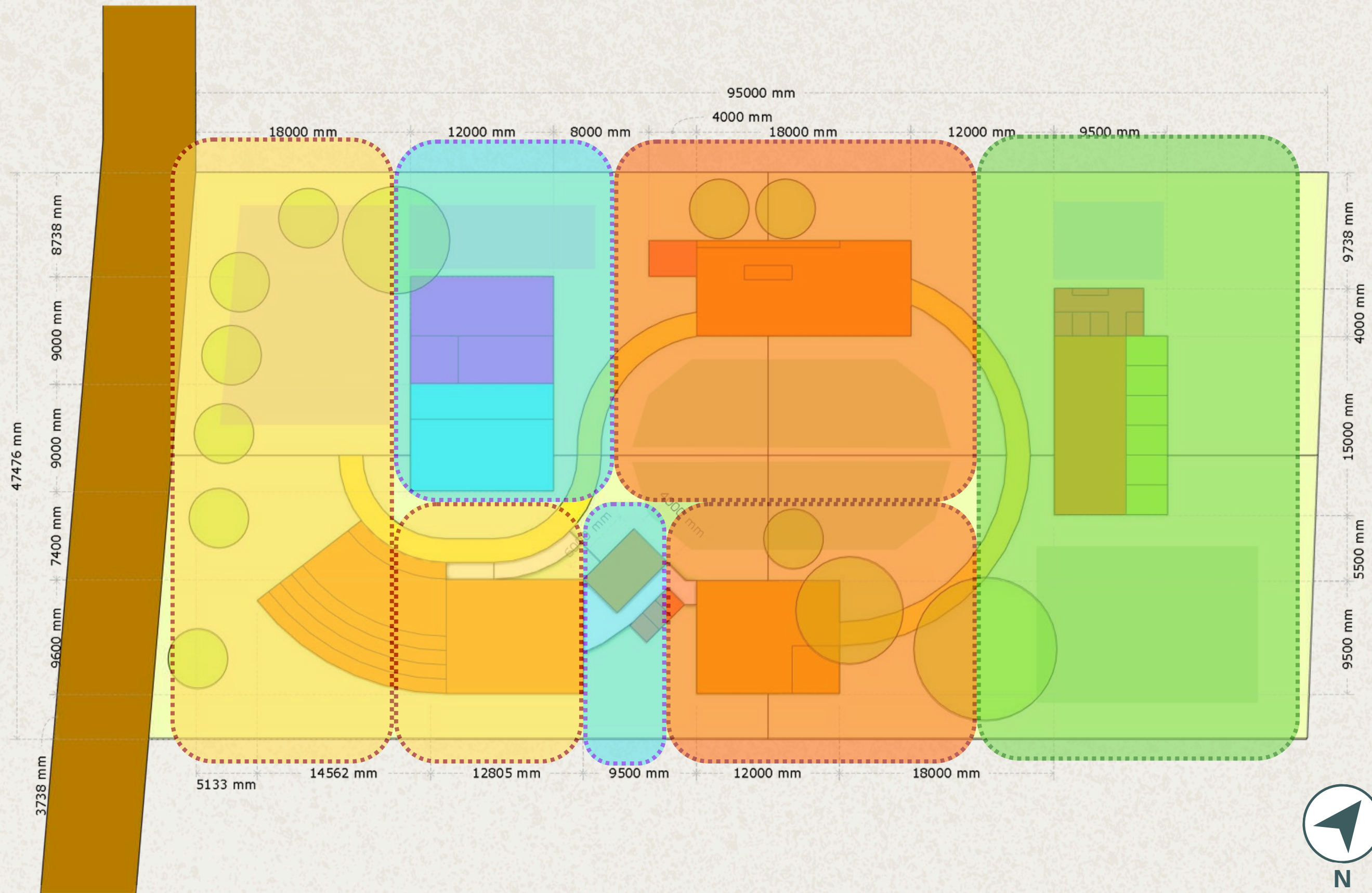
Great accessibility, close to city center, seaport, and airport.
Accessibility for community and projects all over Sumba Island.

Initial Concept

Rough Layout



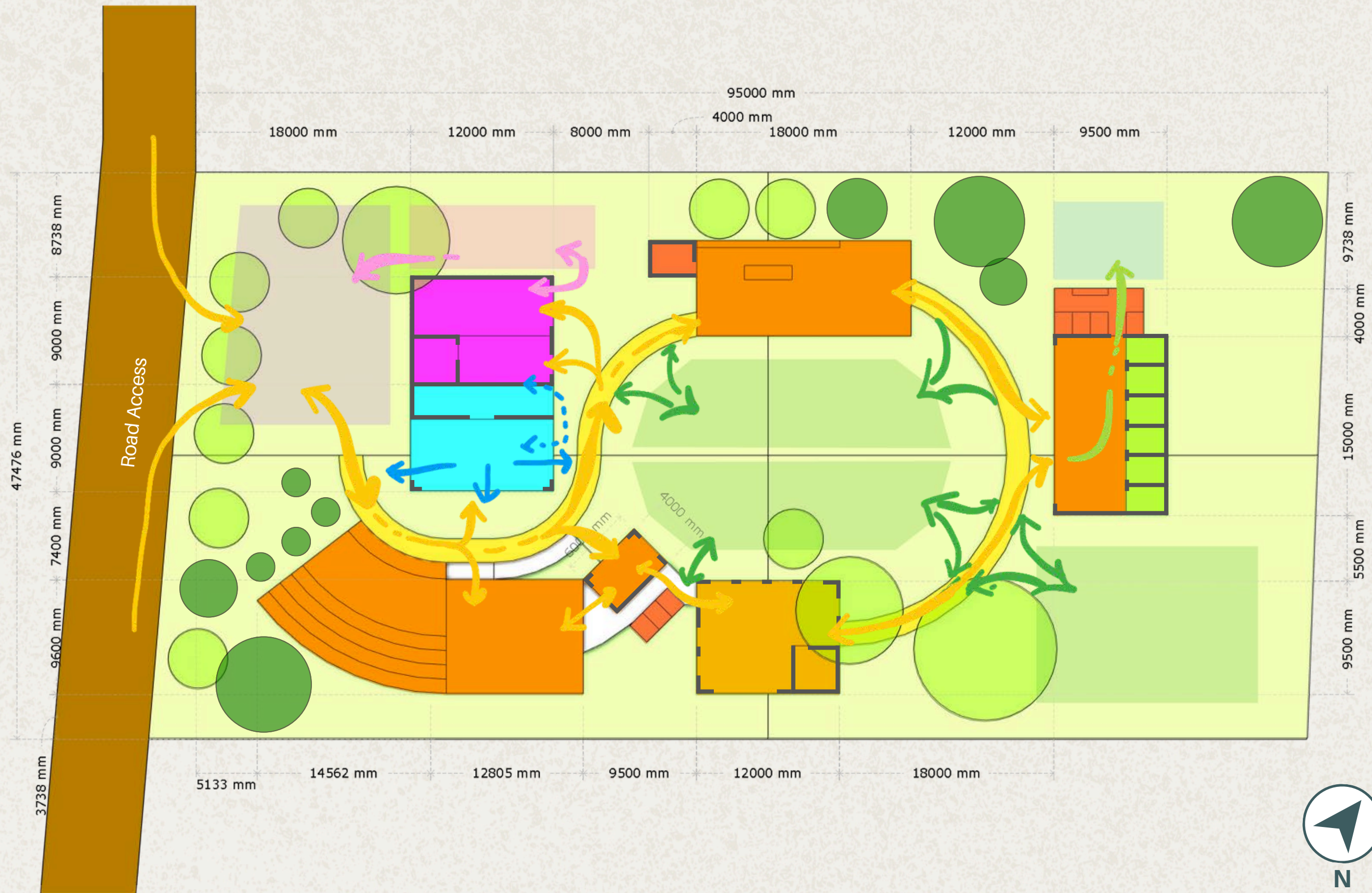
- Existing Tree
- Flow of spaces
- Public Zone
- Buffer Zone
- Semi Private Zone
- Private Zone



- Existing Tree
- Flow of spaces
- Public Zone
- Buffer Zone
- Semi Private Zone
- Private Zone

Community Center

Zoning Plan 1st Level

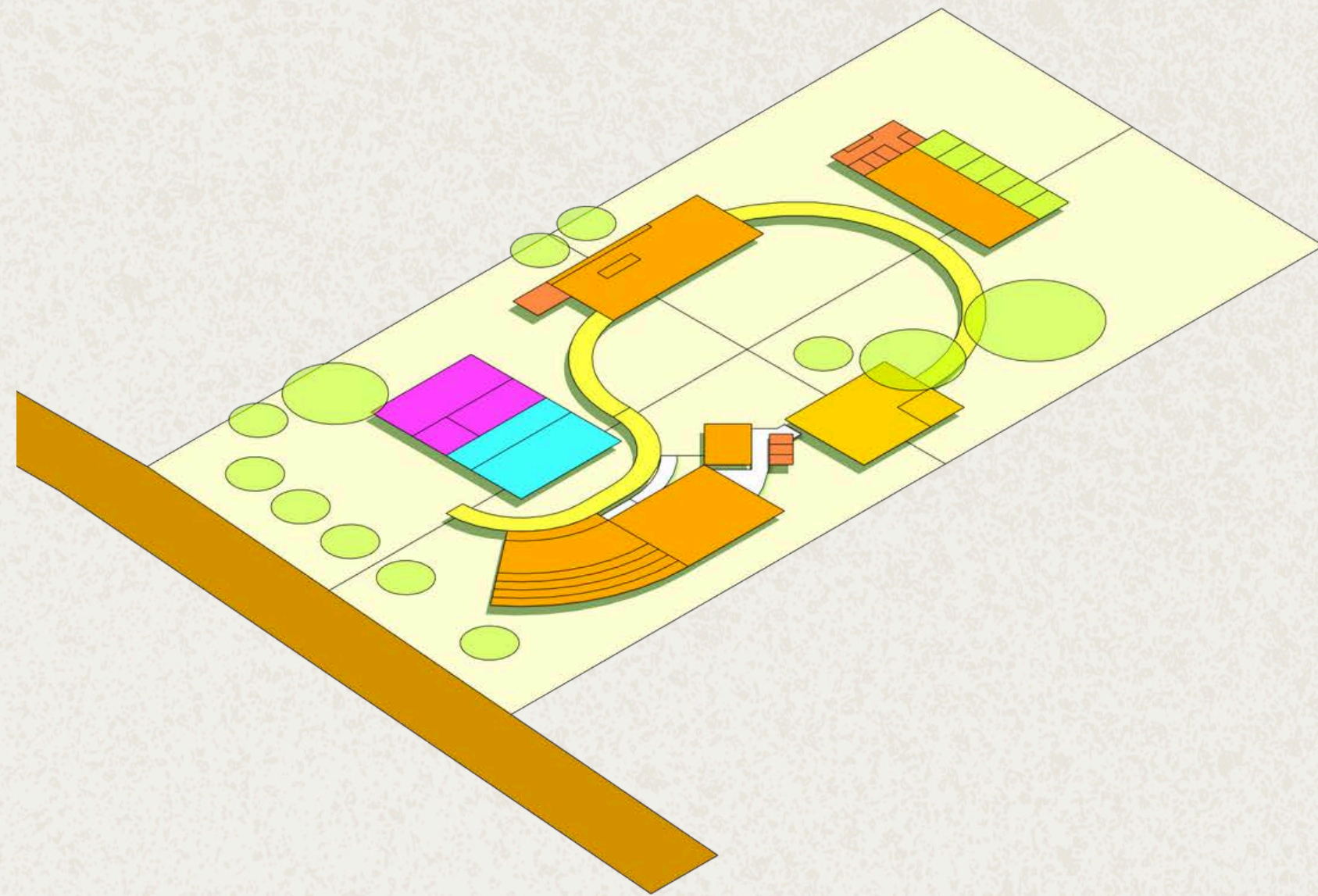


- Existing Tree
- Additional Greeneries
- General Flow
- Medic Flow
- Garage & Equipment Flow
- Garden Flow
- Resident Flow



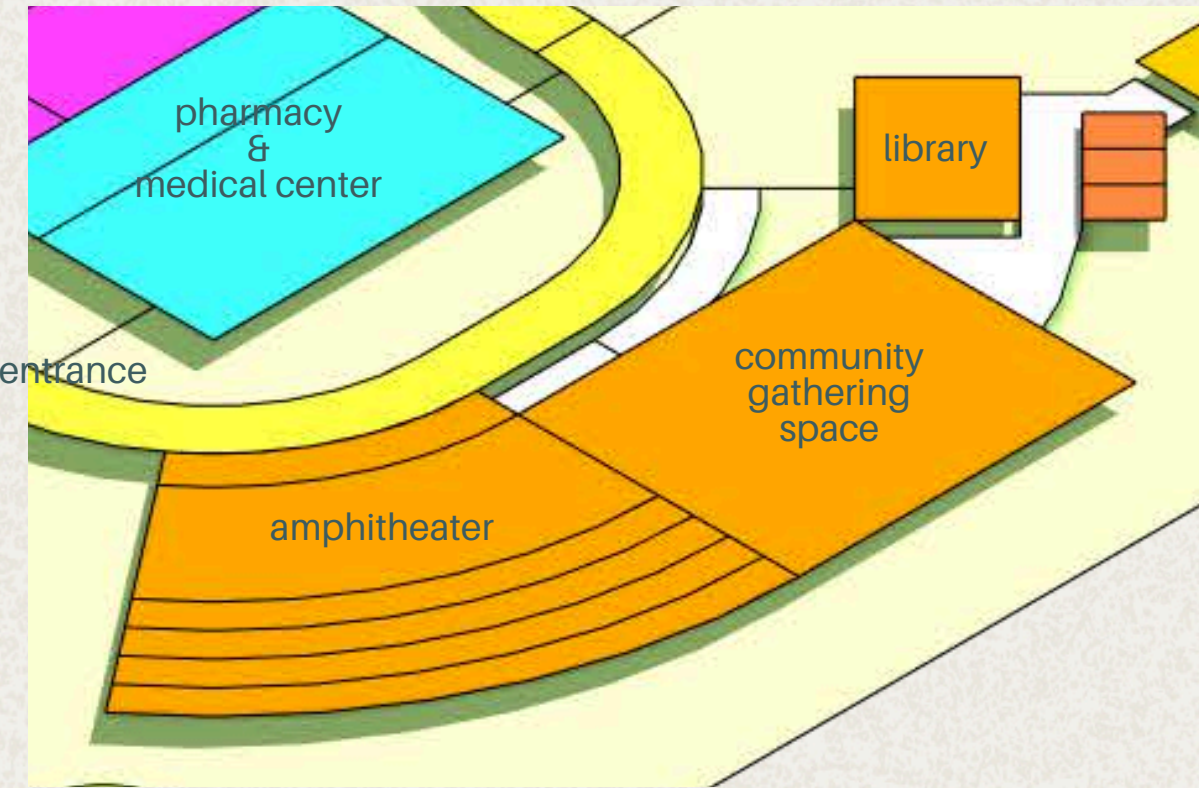
Community Center

Layout Plan 1st Level



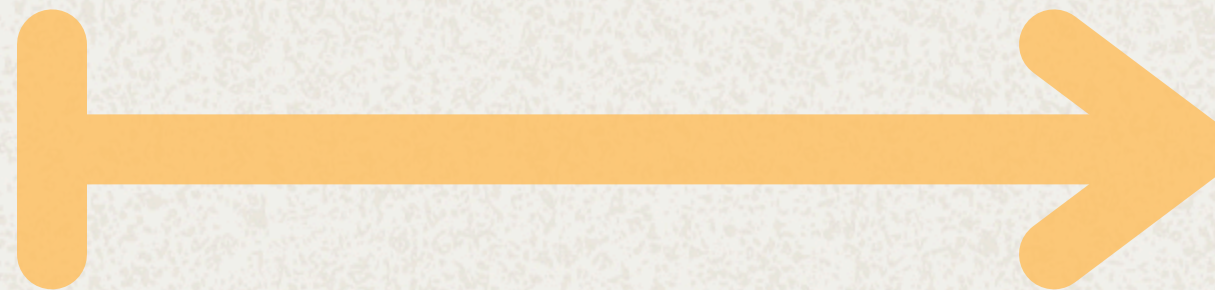
Concept

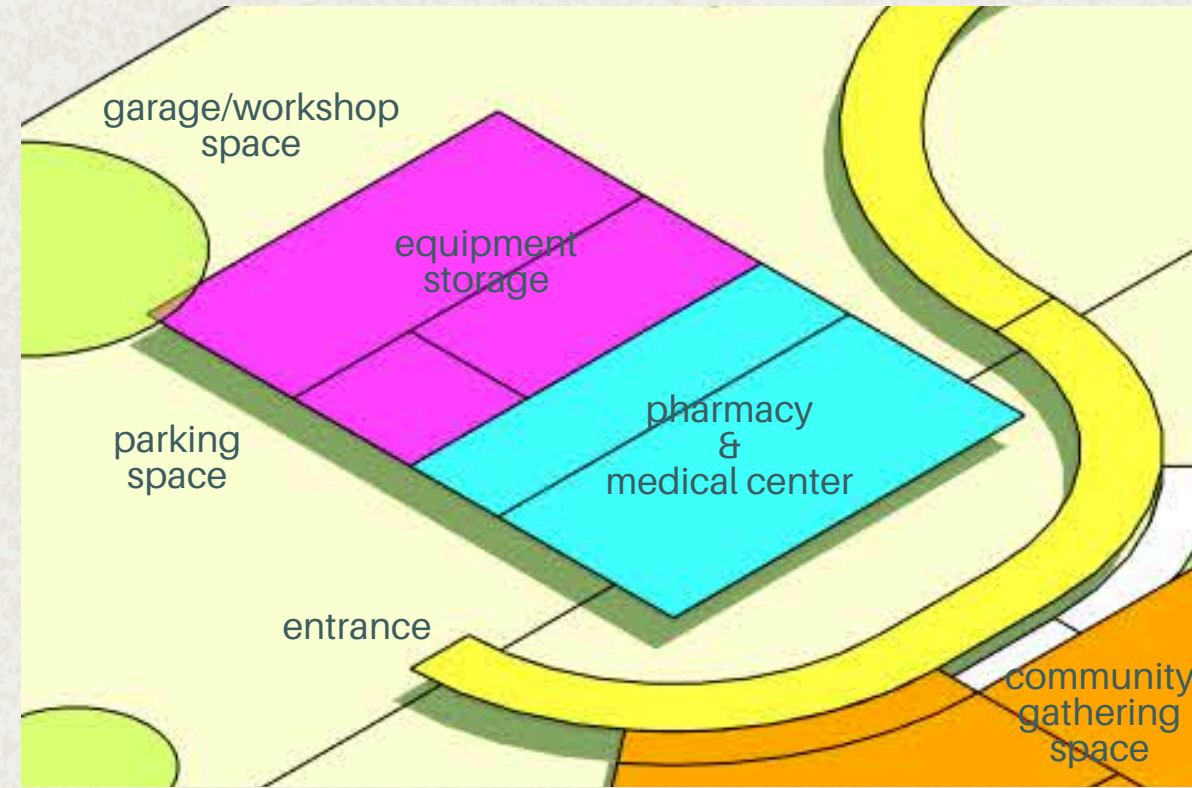
An inclusive, open-plan concept with minimal site intervention and optimized cost-time delivery.



Public zone, community related activities; meetings, gatherings, seminars, & classes.

Accessible directly from parking & entrance area. Direct access to medical center.

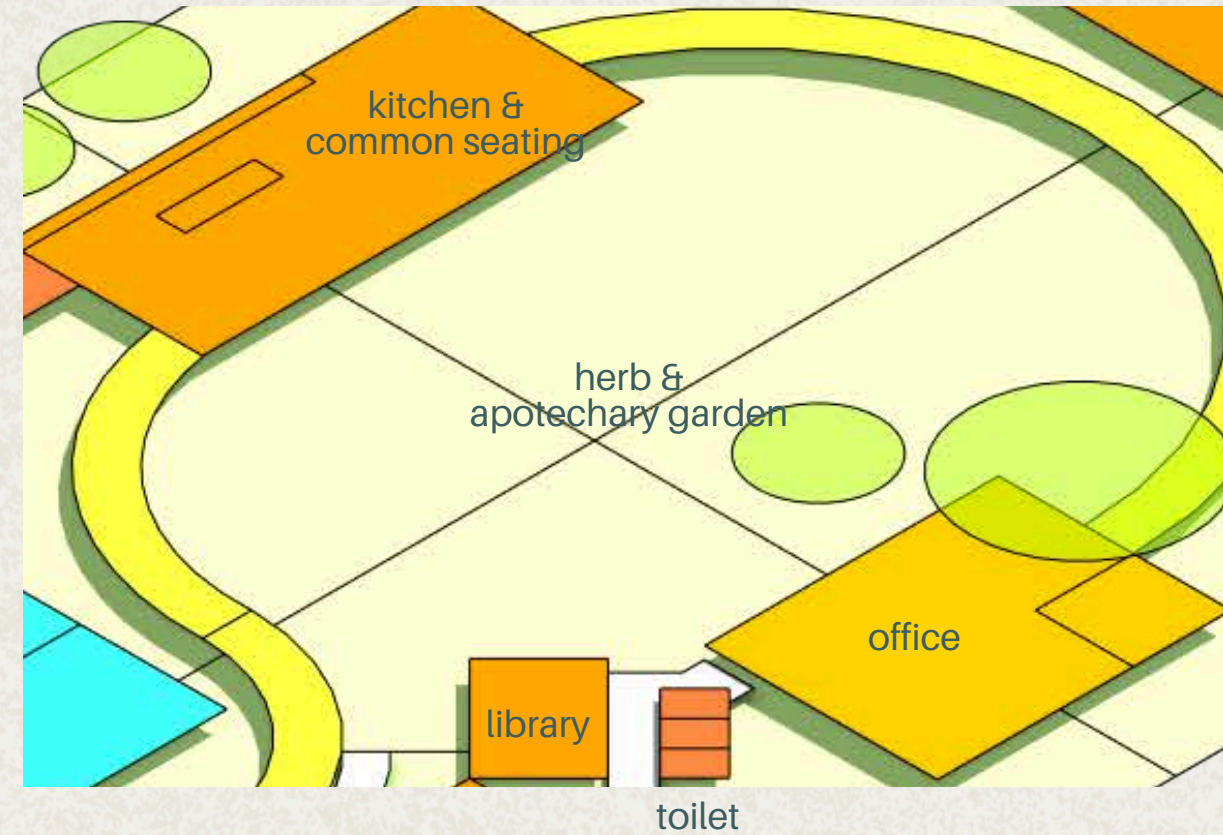




Buffer Zone, walled space with limited access from parking & entrance area. But easily accessible from semi-private zone.

Medical center positioned closer to community area, with storage for pharmacy and field equipments on the side.





Hearth of the HQ.
Kitchen for invited-community-members to exchange knowledge regarding healthy meal; with long table to eat together among volunteers and families of the foundation.
Office as a space where strategies being planned and IT related works to be executed.

The buildings built surrounding a central courtyard, filled with garden for medical use and kitchen.



Let's Talk!

Sumba HQ Project

