

FAIR FUTURE NEW SOCIO-MEDICAL CENTER

WHY A NEW CENTRE IS ESSENTIAL

A new home for care, training, and community support in East Sumba




Since 2019, Fair Future has operated from Rumah Kambera, a rented building that is now too old, too small, and falling apart. It no longer meets the needs of our medical teams, our logistics, or our training programs.

We store medical supplies, repair equipment, train health agents, and receive patients in a place that was never designed for this work.

After many years of humanitarian action here in Nusa Tenggara Timur, one thing is clear:

To keep saving lives efficiently, we must build a centre that genuinely reflects the scale of our mission.

Waingapu, the 7th of Decembre 2025



ALEX WETTSTEIN

AN IDEAL LOCATION TO BUILD FAIR FUTURE'S FUTURE

This land is the first foundation stone of a project we have been dreaming of for years

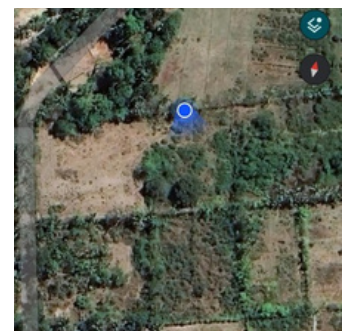
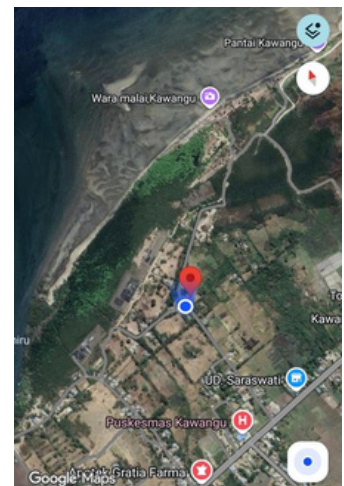


We have secured a beautiful 2,000 m² piece of land in Kawangu, surrounded by trees, peaceful, with direct road access, and only ten minutes from Waingapu airport.

This is a rare opportunity for Fair Future to finally build a permanent base designed to support our medical, social, and educational programs.

KEY FACTORS

Surface	: 2,000 m ²
Location	: Kawangu, East Sumba https://maps.app.goo.gl/nhJq8j4ioEaJRlet5
Access	: Road access, airport nearby
Price	: 185 million IDR (approx. 9,000 CHF)
Status	: The land is now secured. A 15% deposit has been paid directly through our notary.
Additional Detail	: This plot offers twice the surface area of the first option we examined, for nearly the exact cost, without the environmental issues associated with mangrove insects.



THE FUTURE RUMAH KAMBERA: FAIR FUTURE'S HEART IN EAST SUMBA

A place to treat, to train, to build, to welcome. A place to live.



This land will become our operational centre, a real home where our teams can work safely and efficiently, where communities can receive care, where health agents can be appropriately trained, and where volunteers can participate in our programs.

Everything we build will be simple, local, functional, and adapted to East Sumba's reality.

FUTURE FACILITIES

- A workshop and shelter for our vehicles and trucks
- A pharmacy and a small medical post
- A large warehouse for tools, water supply projects, and medical supplies
- A training room for Kawan Sehat health workers and for all other social and medical training programs.
- A shared workspace and common areas
- A communal kitchen
- Simple accommodations for staff and volunteers
- Sanitary facilities, showers, and a laundry room
- A community garden for food production and educational activities
- A reception area for visitors, volunteers, partners, and donors
- An area dedicated to local innovation and field experimentation
- Open outdoor space for activities

HELP US BUILD FAIR FUTURE'S FIRST PERMANENT CENTRE IN EAST SUMBA

For sixteen years, we have done everything with very little, always renting, constantly adapting, always repairing. Now, our programs have grown far beyond the capacity of our current base.

Buying this land is the first crucial step toward creating an intense, permanent socio-medical centre that will support thousands of families each year.

The land is secured thanks to a 15% deposit already paid through our notary. We now need to complete the purchase and prepare the construction stage for 2026.

This centre will become the beating heart of Fair Future's work in Indonesia. Together, we can build it.

THANK YOU FOR HELPING US BUILD A PLACE WHERE CARE, DIGNITY, AND SOLIDARITY CAN LIVE