

2025

# ANNUAL REPORT

FAIR FUTURE  FOUNDATION

PREPARED BY  
**FAIR FUTURE FOUNDATION**

<https://fairfuturefoundation.org>  
[hello@fairfuturefoundation.org](mailto:hello@fairfuturefoundation.org)



# TABLE OF CONTENTS

• Letter from the President / A Word from Alex	page 2
• About Fair Future – Who We Are	page 5
• Context 2025-2026 – Humanitarian and Medical Situation in Indonesia	page 7
• <b>Our Programs and Achievements 2025</b>	page 8
◦ <b>A1</b> - Primary Healthcare Program	page 9
◦ <b>B2</b> - Strengthening the Local Health System	page 11
◦ <b>C1</b> - Water Connections in Hambarita	page 13
◦ <b>C2</b> - Water Connections in Laindatang	page 16
◦ <b>D1</b> - Kawan Against Malaria - Understanding to Act	page 18
◦ <b>D2</b> - Kawan Against Malaria - Sustainable Prevention	page 20
◦ <b>E1</b> - SolarBuddy Program	page 22
◦ <b>F1</b> - Access to Electricity for Schools	page 24
◦ <b>G1</b> - Truck of Life	page 26
◦ <b>G2</b> - Truck n'Load	page 27
◦ <b>H1</b> - Community Empowerment	page 29
◦ <b>I1</b> - Prevention & Health Education	page 31
◦ <b>J1</b> - Kawan Sehat Health Workers	page 33
◦ <b>J2</b> - The Kawan Sehat Health Handbook	page 35
◦ <b>K1</b> - Rumah Kampera	page 36
• Some Testimonials	page 38
• 2025 Outlook	page 44
• Thank you all	page 45



## Dear Friends and Donors



**The year 2025 was not easy. It was a pivotal year.**

In the regions where we work, in eastern Indonesia, the situation has become even harsher. The heat has become more intense, longer-lasting, and more exhausting. The seasons are disrupted. Water is scarcer or arrives too suddenly. Crops are suffering. So are people's bodies.

**Climate change is not an abstract concept here.** It is a daily, physical, and measurable reality. It exacerbates poverty, weakens health, and makes every act of survival more costly.

At the same time, the global economy has slowed. Humanitarian aid is decreasing. Major international funding is shrinking, particularly due to the collapse of some long-standing support programmes, such as those from USAID.

**At the local level, budget cuts for 2025–2026** have affected basic needs: food, health, housing, water, sanitation, and education. Access to healthcare, already precarious, has become even harder, leaving thousands of people without options and drastically reducing the number of health insurance positions for the poorest.

**The consequences are visible.** In 2025, a worrying increase in poverty-related illnesses was observed. Tuberculosis is on the rise, several cases of polio have been reported, and numerous cases of leprosy are emerging in our areas of operation. These illnesses reflect a failing system and insufficient access to healthcare.

**Faced with this, we did not back down.**

In 2025, Fair Future Foundation continued its daily work on the ground. Our primary healthcare programme, now in its fourth year, helped more than a thousand patients, often in villages without doctors. We strengthened training for local health workers, improved access to medicines, and enhanced the management of preventable emergencies.



[Click here to understand how climate change directly affects the health of the most vulnerable communities and why acting now is vital.](#)





We have built **numerous reservoirs**, including one with a capacity of 150,000 litres, providing communities with access to clean, safe water.

We have distributed nearly **2,500 SolarBuddy** lamps to children and families without electricity, ensuring their safety, education, and a life free from toxic fumes. We have equipped healthcare facilities, supported a hospital, and transported supplies and medicines.

**All of this while remaining true to our values:** no salaries in Switzerland, fair compensation for local teams, and dedicated volunteers. We work with communities, never in their place.

**2025 was a year of structuring.** We are currently pursuing ZEW0 certification, the key to transparency, which we expect to obtain in 2026. We need to strengthen our governance and recruit two new board members to support the foundation with high standards and independence.

None of what we do would be possible without those committed to working alongside us. Our volunteers are always there. Our local, technical, and institutional partners. The communities **that trust us. And of course, our donors, without whom none of this would exist.**

**2025 reminded us of something essential:** *"In a more unstable, hotter, and more unequal world, concrete action matters more than ever. Treating. Preventing. Building. Training. Being there. Day after day."*

Fair Future Foundation will continue. With clarity. With determination. With humanity. Thank you for standing with us.



Alexandre Wettstein  
Président et Fondateur





# ABOUT FAIR FUTURE

---

**Founded in Switzerland in 2008**, after two years of fieldwork beginning in 2006, Fair Future Foundation is an independent medical and social organisation recognised as a public benefit organisation and tax-exempt. For **over 17 years**, we have been working in some of the most isolated regions, notably in East Sumba, Indonesia, to guarantee access to healthcare, water, education, and a dignified life.

**Our approach is direct and proactive.** We go where needs are real and public structures are no longer sufficient. The projects we undertake are designed, implemented, and monitored by our teams on the ground. We prioritise action that is both useful and measurable. Every resource is mobilised rigorously, without unnecessary red tape.

**Between 93% and 95%** of the funds we receive are invested directly in the field. We have no employees in Switzerland. All the foundation's Swiss members work on a voluntary basis, including Alex in the field. Only our Indonesian staff are paid, to strengthen local skills, support the local economy, and ensure the sustainability of our actions.



[Learn more about how Fair Future uses the funds](#)

## Fair Future today

- **Local Team:** More than 85 active volunteers in the field, supported by around fifteen local staff members. Many are also beneficiaries of the programmes, reinforcing a model of action rooted in community realities.
- **Integrated Approach:** Collaboratively designed medical, health, and social programmes covering primary healthcare, the fight against malaria and infectious diseases, access to clean water, nutrition, education, and hygiene.
- **Community Participation:** Communities are not spectators but active participants. They contribute to the decisions, implementation, and sustainability of actions in their area.
- **Rumah Kambera:** A medical and social base in East Sumba, the operational heart of field activities, a place for care, coordination, training, and connection between the teams and the villages.
- **Local Partnership:** Kawan Baik Indonesia, a partner foundation established in 2019, with whom we collaborate fully on a shared, local, sustainable, and transparent approach.

Fair Future also has a coordination office in Denpasar, **Rumah Baik** (*“the good house”*). This office handles administrative and financial management, programme development, logistics, and data and content management.

We have decided **not to renew the lease for Rumah Kambera** in East Sumba. This decision has led us to plan the construction and relocation of a new medical and social centre, better suited to current and future needs, by 2026.



[Where and how to contact us?](#)

# CONTEXT 2025-2026 – HUMANITARIAN AND MEDICAL SITUATION IN INDONESIA

---

In the far east of Indonesia, where we work, lie some of the country's poorest and most isolated regions. Here, everything costs more than elsewhere. **Materials, medicines, and food** must be transported by boat. Rising oil prices directly affect the cost of living, while access to clean water, electricity, and healthcare remains extremely limited.

Less than half the population has access to clean water, and **nearly 65%** of children suffer from malnutrition. **More than 120 villages** and about **100 schools** still lack electricity, highlighting the importance of our energy and education programmes.

Diseases of poverty remain widespread. Malaria, tuberculosis, leprosy, and polio continue to affect the population. The hospital in Waingapu, which serves approximately **1,000,000 people**, is desperately under-resourced. In 2025, Fair Future Foundation supported the region with a **major donation** of medical equipment valued at tens of thousands of francs to strengthen its healthcare capacity.

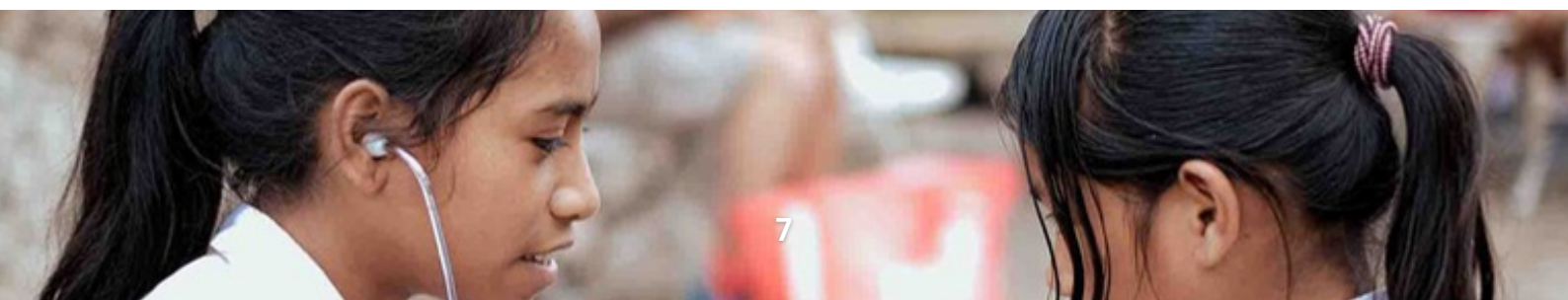
Local health centres (*Puskesmas*) are struggling to recruit doctors. In outlying areas, many are open only 12 hours a day. The reduction of certain benefits (more than thirty illnesses and services) under Indonesia's basic health insurance (BPJS) has further **jeopardised access to healthcare** for everyone, let alone the poorest.

Finally, drought is exacerbating the situation. Water lies underground, but at depths inaccessible without drilling. The greatest epidemic here remains poverty itself. In 2025, Fair Future Foundation remains the only foreign medical NGO active in this region.

**We refuse to give up.**



*Do you have a medical question to ask?*





# OUR PROGRAMS AND ACHIEVEMENTS 2025

<https://fairfuturefoundation.org/programs-overview/>

## A

### Primary Medical Care Program

Essential care where there was none. Every month, Kawan Sehat health workers provide vital care in the most isolated villages.

## B

### Strengthening the local health system

Support for health centers and the referral hospital. Essential equipment, medical coordination and concrete improvement of the quality of care.

## C

### Water Connections Programs

Clean water as the foundation of everything. Health, nutrition, hygiene and dignity become possible where water was lacking.

## D

### Kawan Against Malaria Programs

Reducing malaria through prevention, training and local action. An ongoing fight led by the communities themselves.

## E

### SolarBuddy Program

More than 2,500 children have access to light. They can study, move around and live safely thanks to simple and sustainable energy.

## F

### Access to electricity for schools

Installing reliable solar systems for studying, teaching, and healthcare. Electricity becomes a direct lever for education, health, and security.

## G

### Truck of Life & Truck n'Load

Going where no one else goes. Transporting care, water, supplies and concrete solutions to the most remote areas.

## H

### Community Empowerment

Strengthening local capacities. Women, men and children become agents of their own health, knowledge and future.

## I

### Prevention and Health Education

Informing to prevent. Educational materials and direct exchanges to improve health with limited but effective means.

## J

### Kawan Sehat Health Agents

To train, equip and support committed local agents. A permanent medical presence in villages where no professional goes.

## K

### Rumah Kampera - Socio Medical Base Camp

The anchor point of our actions in East Sumba. A space for coordination, care, training and connection with communities.



# A1 - PROGRAMME DE SOINS MÉDICAUX PRIMAIRES

#PrimaryMedicalCare



In 2025, the **primary healthcare programme** provided care to an average of **800 to 1,000 people per month** in areas with no other access to healthcare.

The **21 Kawan Sehat** community health workers remained fully committed. The team is almost entirely female, with only one man, and all are **deeply rooted in on-the-ground realities**.

Skills development continued. **Two training sessions**, totalling five days, were organised to enhance clinical practice, infection prevention, and emergency care.

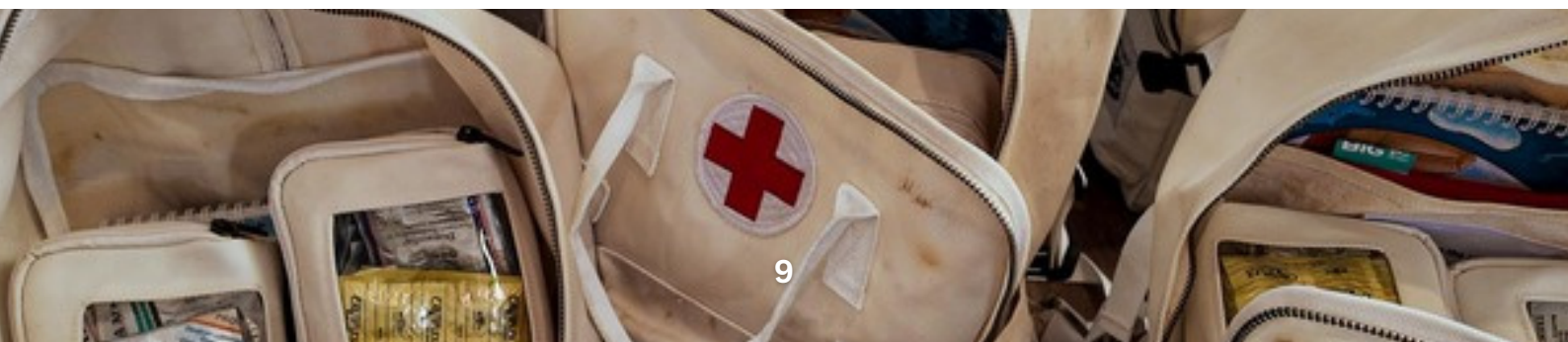
Training materials were updated, and the health workers' medical equipment was reinforced to meet the increasing workload.

Faced with the high frequency of serious infections, a major medical decision was made with the agreement of local authorities: **the controlled introduction of antibiotics** into the programme. Specific training was provided to effectively combat septic conditions and septicemia, which are responsible for **many preventable deaths** in these regions. This decision is part of a rigorous, controlled approach adapted to local realities.

The Kawan Sehat medical monitoring application remains fully operational. Cases are documented, shared with our medical teams, and analysed regularly. Field assessments are conducted approximately every three months by the coordinators, including Erwin, enabling **continuous monitoring**, therapeutic **adjustments**, and rigorous medication **management**.

**The main challenge remains access to essential medicines.** Patient volume is increasing, while resources are dwindling. Demand is so high that even some public health centres are now requesting our support. Despite these constraints, the programme continues **to save lives every day**.

In 2025, we decided to gradually expand the programme, integrating 6 to 8 new health agents, potentially **reaching 10 by 2026**, alongside an organisational overhaul. The objective is clear: to cover the entire territory, representing a population of approximately **400,000 people**, with accessible, continuous, and dignified care.





# B2 - STRENGTHENING THE LOCAL HEALTH SYSTEM

#CommunityCare



<https://fairfuturefoundation.org/medical-equipment-donation-rsud-waingapu/>



In 2025, we donated nearly 300 million Indonesian rupiah, or approximately **16,000 Swiss francs**, worth of medical equipment to RSUD Umbu Rara Meha, the main hospital in Sumba serving nearly **one million inhabitants**. This amount reflects a worrying reality: a chronic shortage of equipment, sometimes even the most basic.

At this hospital, a simple pair of scissors might be missing. Some stethoscopes are defective, pulse oximeters are inadequate, and ECG machines are scarce or out of service. Some equipment is outdated and worn, and cannot be repaired due to a lack of spare parts or qualified technicians. Three operating theatres are installed, but only one is truly operational.

The neonatal and paediatric intensive care units have only one ventilator. Two CPAP machines are available, one of which is partially malfunctioning.

**These deficiencies directly affect patient safety.** Without reliable monitoring and appropriate equipment, complications increase, as does preventable mortality.

Funding for the equipment was made possible by the support of **Rotary Australia** and **Laboratory Without Walls**. However, the working group was formed by the Fair Future Foundation and Kawan Baik Indonesia.

**A dozen of us, along with the RSUD teams**, collaborated closely. We met several times at Rumah Kambera and exchanged thousands of WhatsApp messages to precisely define **the on-the-ground needs**. The final list reflects the daily practice of healthcare workers, not administrative priorities.

**After several months of logistical coordination**, we delivered surgical instruments, monitoring devices, emergency and laboratory equipment, supplemented by equipment collected in Switzerland, **particularly in Valais**.

The official handover took place in the presence of the regent and regional health authorities. But the main point lies elsewhere: equipping healthcare workers with the tools they need to work effectively. Strengthening this hospital strengthens the entire region.

Sometimes, saving a life starts simply with having functional equipment at the right time.







# C1 - WATER CONNECTIONS PROGRAM - HAMBARITA

<https://fairfuturefoundation.org/eight-ferro-cement-reservoirs-hambarita/>



In 2025, Fair Future Foundation implemented Phase I of the Water Connections project in Hambarita in response to a need clearly identified during field assessments. The project involved constructing eight ferrocement water tanks, each with a capacity of **4,400-5,300 litres**, serving small groups of families.

These robust structures were designed to store rainwater sustainably and ensure a reliable water supply for daily use.

The project's implementation relied on **close coordination** with the beneficiary communities. **Residents actively participated** in all stages: site preparation, access repairs, manual material transport, construction, and finishing.

This involvement not only helped **overcome significant logistical challenges** but also strengthened local ownership of the facilities and their future maintenance.

Today, **Hambarita** has a more reliable and better-distributed water storage capacity. The eight named reservoirs meet essential needs during dry periods, reduce dependence on purchased water, and improve hygiene.

**Simple yet meaningful names**—*Wai Ma Hammu, Wai Kahingir, Wai Ma Njanjar, Wai La Wurung, Wai Maringu, Wai Pandulang, Wai Pa Luri Wangu, and Wai La Padang*—were thoughtfully selected by children and approved by elders. These names, applied to reservoirs, ensure their purpose endures beyond the current season. (**Click on the names** to see the details of each reservoir)

Beyond infrastructure, this project directly benefits public health by reducing the risk of water contamination and supporting prevention efforts by local medical teams.

In Hambarita, Water Connections exemplifies the Fair Future Foundation's approach: simple, context-specific technical solutions **developed with the communities** and designed to last.



The complete final report, with all technical data, information and images of the Water Connections project in Hambarita, is available online and can be viewed in full via this link.





If you would like to fund a 5,350-liter tank and provide a family with sustainable access to clean water, [download the project document here.](#)

# FEROCEMENT TANK 5,3 m<sup>3</sup> WAI LA PADANG

## BUILT BY HAND & TOGETHERNESS

The Wai La Padang (Water in the Field) Ferrocement Tank, which was completed on August 7, 2025, is a water tank that was built manually by the hands of local residents, including its foundations.

Located in the home of **Jhoni Mbulu Manggal** family, this house can accommodate ±15 people. It was built using cement, sand, wire, water, and most importantly, mutual cooperation and solidarity.

### USAGE CAPACITY

Daily water necessities:  
15 people × 16 liters = 240 liters  
→ 5.300 + 240 = around 23 days  
This means that this tank is sufficient for ±23 days.

### WHY IS THIS IMPORTANT?

This tank is used for:  
• Drinking & Cooking  
• Bathing & Washing  
• Basic Hygiene & Health Needs

Field Implementation Team:



Donations and Support by:



SCAN HERE  
To view the Facility Map  
More information:

kawanbaikindonesia.org  
+62 818 0220 0818

### Wai La Padang Tank

Radius (r): 85 cm  
Height (h): 244 cm  
Thickness (t): 3 cm  
 $\pi = 22/7$  or 3,14

### Tank Volume Formula

$V = \pi \times r^2 \times h$   
To calculate the volume (V) in the tank, first find (r - t) before using the volume formula

# FEROCEMENT TANK 5,3 m<sup>3</sup> WAI PA LURI WANGU

## BUILT BY HAND & TOGETHERNESS

The Wai Pa Luri Wangu (Water for Life) Ferrocement Tank, which was completed on August 6, 2025, is a water tank that was built manually by the hands of local residents together with the foundation.

Located in the **Hahu Tanggu Mara** family home, this house can accommodate ±15 people. It was built using cement, sand, wire, water, and most importantly, mutual cooperation and solidarity.

### USAGE CAPACITY

Daily water necessities:  
15 people × 16 liters = 240 liters  
→ 5.300 + 240 = around 23 days  
This means that this tank is sufficient for ±23 days.

### WHY IS THIS IMPORTANT?

This tank is used for:  
• Drinking & Cooking  
• Bathing & Washing  
• Basic Hygiene & Health Needs

Field Implementation Team:



Donations and Support by:



SCAN HERE  
To view the Facility Map  
More information:

kawanbaikindonesia.org  
+62 818 0220 0818

### Wai Pa Luri Wangu Tank

Radius (r): 85 cm  
Height (h): 244 cm  
Thickness (t): 3 cm  
 $\pi = 22/7$  or 3,14

### Tank Volume Formula

$V = \pi \times r^2 \times h$   
To calculate the volume (V) in the tank, first find (r - t) before using the volume formula

# FEROCEMENT TANK 5,3 m<sup>3</sup> WAI PANDULANG

## BUILT BY HAND & TOGETHERNESS

The Wai Pandulang (Rescue Water) Ferrocement Tank, which was completed on July 16, 2025, is a water tank that was built manually by the hands of local residents together with the foundation.

Located in the **Kaita Legir** family home, this house can accommodate ±15 people. It was built using cement, sand, wire, water, and most importantly, cooperation and solidarity.

### USAGE CAPACITY

Daily water necessities:  
15 people × 16 liters = 240 liters  
→ 5.300 + 240 = around 23 days  
This means that this tank is sufficient for ±23 days.

### WHY IS THIS IMPORTANT?

This tank is used for:  
• Drinking & Cooking  
• Bathing & Washing  
• Basic Hygiene & Health Needs

Field Implementation Team:



Donations and Support by:



SCAN HERE  
To view the Facility Map  
More information:

kawanbaikindonesia.org  
+62 818 0220 0818

### Wai Pandulang Tank

Radius (r): 85 cm  
Height (h): 244 cm  
Thickness (t): 3 cm  
 $\pi = 22/7$  or 3,14

### Tank Volume Formula

$V = \pi \times r^2 \times h$   
To calculate the volume (V) in the tank, first find (r - t) before using the volume formula

# FEROCEMENT TANK 5,3 m<sup>3</sup> WAI MARINGU

## BUILT BY HAND & TOGETHERNESS

The Wai Maringu (Cold Water) Ferrocement Tank, which was completed on July 15, 2025, is a water tank that was built manually by the hands of local residents, including its foundations.

Located in the **Nggada Yabu** family home, this house can accommodate ±15 people. It is semi-buried to maintain temperature and prevent contamination. It was built using cement, sand, wire, water, and most importantly, teamwork and solidarity.

### USAGE CAPACITY

Daily water necessities:  
15 people × 16 liters = 240 liters  
→ 5.300 + 240 = around 23 days  
This means that this tank is sufficient for ±23 days.

### WHY IS THIS IMPORTANT?

This tank is used for:  
• Drinking & Cooking  
• Bathing & Washing  
• Basic Hygiene & Health Needs

Field Implementation Team:



Donations and Support by:



SCAN HERE  
To view the Facility Map  
More information:

kawanbaikindonesia.org  
+62 818 0220 0818

### Wai Maringu Tank

Radius (r): 85 cm  
Height (h): 244 cm  
Thickness (t): 3 cm  
 $\pi = 22/7$  or 3,14

### Tank Volume Formula

$V = \pi \times r^2 \times h$   
To calculate the volume (V) in the tank, first find (r - t) before using the volume formula

# FEROCEMENT TANK 5,3 m<sup>3</sup> WAI LA WURUNG

## BUILT BY HAND & TOGETHERNESS

The Wai La Wurung (Water in a Pot) Ferrocement Tank, which was completed on July 5, 2025, is a water tank that was built manually by the hands of local residents together with the foundation.

Located in the **Ndilu Hamba Meha** family home, this house can accommodate ±15 people. It is semi-buried to maintain temperature and prevent contamination. It was built using cement, sand, wire, water, and most importantly, teamwork and solidarity.

### USAGE CAPACITY

Daily water necessities:  
15 people × 16 liters = 240 liters  
→ 5.300 + 240 = around 23 days  
This means that this tank is sufficient for ±23 days.

### WHY IS THIS IMPORTANT?

This tank is used for:  
• Drinking & Cooking  
• Bathing & Washing  
• Basic Hygiene & Health Needs

Field Implementation Team:



Donations and Support by:



SCAN HERE  
To view the Facility Map  
More information:

kawanbaikindonesia.org  
+62 818 0220 0818

### Wai La Wurung Tank

Radius (r): 85 cm  
Height (h): 244 cm  
Thickness (t): 3 cm  
 $\pi = 22/7$  or 3,14

### Tank Volume Formula

$V = \pi \times r^2 \times h$   
To calculate the volume (V) in the tank, first find (r - t) before using the volume formula

# FEROCEMENT TANK 5,3 m<sup>3</sup> WAI MA NJANJAR

## BUILT BY HAND & TOGETHERNESS

The Wai Ma Njanjar (Water Flow) Ferrocement Tank, which was completed on June 29, 2025, is a water tank that was built manually by the hands of local residents, including its foundations.

Located in **Kaita Rina** family home, this house can accommodate ±15 people. It is semi-buried to maintain temperature and prevent contamination. It was built using cement, sand, wire, water, and most importantly, teamwork and solidarity.

### USAGE CAPACITY

Daily water necessities:  
15 people × 16 liters = 240 liters  
→ 5.300 + 240 = around 23 days  
This means that this tank is sufficient for ±23 days.

### WHY IS THIS IMPORTANT?

This tank is used for:  
• Drinking & Cooking  
• Bathing & Washing  
• Basic Hygiene & Health Needs

Field Implementation Team:



Donations and Support by:



SCAN HERE  
To view the Facility Map  
More information:

kawanbaikindonesia.org  
+62 818 0220 0818

### Wai Ma Njanjar Tank

Radius (r): 85 cm  
Height (h): 244 cm  
Thickness (t): 3 cm  
 $\pi = 22/7$  or 3,14

### Tank Volume Formula

$V = \pi \times r^2 \times h$   
To calculate the volume (V) in the tank, first find (r - t) before using the volume formula

# FEROCEMENT TANK 4,4 m<sup>3</sup> WAI MA HAMMU

## BUILT BY HAND & TOGETHERNESS

The Wai Ma Hammu (The Best Water) Ferrocement Tank, which was completed on June 5, 2025, is a water tank that was built manually by the hands of local residents together with the foundation.

Located in the **Ndawa Kahindu** family home, it can accommodate ±15 people. It's semi-buried to maintain temperature and prevent contamination. It was built using cement, sand, wire, water, and most importantly, mutual cooperation and solidarity.

### USAGE CAPACITY

Daily water necessities:  
15 people × 16 liters = 240 liters  
→ 4.400 + 240 = around 18 days  
This means that this tank is sufficient for ±18 days.

### WHY IS THIS IMPORTANT?

This tank is used for:  
• Drinking & Cooking  
• Bathing & Washing  
• Basic Hygiene & Health Needs

Field Implementation Team:



Donations and Support by:



SCAN HERE  
To view the Facility Map  
More information:

kawanbaikindonesia.org  
+62 818 0220 0818

### Wai Ma Hammu Tank

Radius (r): 77 cm  
Height (h): 244 cm  
Thickness (t): 3 cm  
 $\pi = 22/7$  or 3,14

### Tank Volume Formula

$V = \pi \times r^2 \times h$   
To calculate the volume (V) in the tank, first find (r - t) before using the volume formula

# FEROCEMENT TANK 4,4 m<sup>3</sup> WAI KAHINGIR

## BUILT BY HAND & TOGETHERNESS

The Wai Kahingir (Clean Water) Ferrocement Tank, which was completed on June 15, 2025, is a water tank that was built manually by the hands of local residents, including its foundations.

Located in the **Nggada Yabu** family home, this house can accommodate ±15 people. It was built using cement, sand, wire, water, and most importantly, mutual cooperation and solidarity.

### USAGE CAPACITY

Daily water necessities:  
15 people × 16 liters = 240 liters  
→ 4.400 + 240 = around 18 days  
This means that this tank is sufficient for ±18 days.

### WHY IS THIS IMPORTANT?

This tank is used for:  
• Drinking & Cooking  
• Bathing & Washing  
• Basic Hygiene & Health Needs

Field Implementation Team:



Donations and Support by:



SCAN HERE  
To view the Facility Map  
More information:

kawanbaikindonesia.org  
+62 818 0220 0818

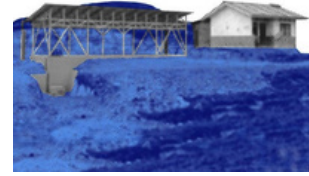
### Wai Kahingir Tank

Radius (r): 77 cm  
Height (h): 244 cm  
Thickness (t): 3 cm  
 $\pi = 22/7$  or 3,14

### Tank Volume Formula

$V = \pi \times r^2 \times h$   
To calculate the volume (V) in the tank, first find (r - t) before using the volume formula

# C2 - WATER CONNECTIONS PROGRAM - LAINDATANG



<https://fairfuturefoundation.org/unmatched-laindatang-rainwater-reservoir/>

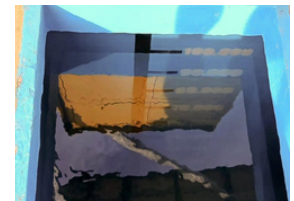


## Matawai Urang – The Source of Water (Laindatang)

In Laindatang, water was long scarce. For nine months in 2024, a drilling attempt was made. Nine months of effort, measurements, and deep drilling, only to ultimately discover the geological failure. Water existed, but not within reach. We had to accept this reality and then decide on a different approach.

**In 2025, Fair Future Foundation made a bold choice:** to change its approach and design a civil engineering solution, a first for the foundation. The Matawai Urang – The Source of Water project was born from this decision. A 114.5 m<sup>3</sup> reservoir, capable of storing nearly 115,000 litres of rainwater, is intended to sustainably secure the water supply for a community of approximately 300 people.

**Construction took three months under extreme conditions.** There was no road access, no electricity, and no on-site water source. A road had to be built, nearly 200 tonnes of materials transported, logistics meticulously planned, and work carried out in intense heat and constant winds. Each stage posed technical, human, and physical challenges.



**The reservoir is now 100% full** and operating as designed. Its uniqueness lies in a completely gravity-fed, pump-free collection system based on a precisely sized collection roof with three inlets: two integrated into the reservoir roof and one connected to the roof of the adjacent teachers' building. Under normal conditions, 30 days of rain, at 3 to 4 hours per day, are enough to completely fill the reservoir with clean, filtered, and safely stored water.

This water now allows people to **drink, cook, wash,** and **feed** their livestock, and to get through the dry season **without relying on costly deliveries** or unreliable sources. In Laindatang, water is no longer a daily emergency. It has once again become a resource.

**Matawai Urang is not just a technical project.** It is a concrete response to a failure, transformed into a sustainable solution. A project that demonstrates that with rigour, perseverance, and a deep understanding of the local context, even the impossible can become reality.



Read the final report on this incredible construction. [Click here to view the report.](#)





# D1 - KAWAN AGAINST MALARIA - UNDERSTAND TO TAKE ACTION



<https://fairfuturefoundation.org/umalulu-malaria-baseline/>



From March to August 2025, Fair Future Foundation conducted an in-depth, multi-month study in one of the regions most affected by malaria in Southeast Asia, aiming to better understand the true impact of the disease on local populations. This area, characterised by one of **the highest endemic rates in the region**, suffers from extreme isolation, structural poverty, malnutrition, and very limited access to healthcare.

This study is the first initiative of its kind in the region. It was designed as an operational understanding tool to guide concrete and sustainable actions on the ground.

The objective was not only to measure but also to analyse in detail **the transmission mechanisms**, local practices, access to prevention resources, and the capacity of systems to cope with the disease.

The study was conducted in the field, in close collaboration with communities, Kawan Sehat agents, health authorities, and various partners. Trained volunteers contributed to data collection, clinical observations, discussions with families, and the analysis of living conditions. This participation ensured reliable information grounded in everyday reality.

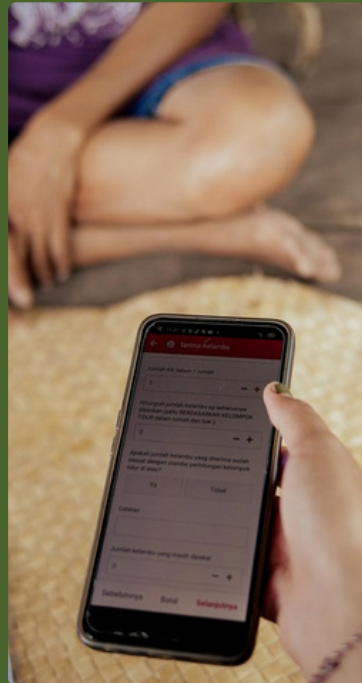
Despite **significant logistical challenges** in an environment without electricity, with limited road access and challenging climatic conditions, the study relied on medical tools, diagnostic tests, the "Kawan Against Malaria" app, and **rigorous documentation**, providing a solid foundation for future research.

Today, this study **is a cornerstone** of the malaria control programme. It has guided concrete actions for prevention and care and paved the way for broader interventions. Fair Future Foundation states: *"Fighting malaria begins with a precise understanding of its manifestations, transmission, and persistence in the field."*

 [Fair Future Foundation FULL Report. Access the full report](#)

 [Scientific Report \(IMRaD format\). Download the scientific report](#)





# D2 - KAWAN AGAINST MALARIA - SUSTAINABLE PREVENTION

#KawanAgainstMalaria



<https://fairfuturefoundation.org/east-sumba-malaria-prevention-2025-field-results/>



In 2025, Fair Future Foundation launched the **East Sumba Malaria Prevention Program** in one of Indonesia's malaria-affected regions, in partnership with Rotary, Malaria Partners International, and local health authorities, and funded primarily by the foundation and private donors. (*See the initial project [here](#)*).

The aim was to **reduce malaria transmission** in rural areas with limited access to healthcare and conducive conditions for mosquito breeding. The programme combined individual protection, community prevention, and health education.

The interventions included indoor residual spraying (IRS), distribution of insecticide-treated bed nets, training and awareness sessions in villages, active screening using rapid tests and microscopy, capacity building in microscopic analysis across the region, and the installation of large-format prevention signs in high-risk areas.

Dozens of Kawan Sehat health workers, **trained by the Fair Future** Foundation, played a central role in implementing the programme. Their continuous presence in the field and close ties with communities ensured the effective dissemination of prevention messages and local ownership of the measures.

The programme's deployment was **logistically complex** due to isolation, lack of electricity, and the challenging climate, but it nevertheless adhered to **international malaria prevention standards**.

This programme is part of a long-term vision: to strengthen local capacities, sustainably integrate prevention into daily practice, and reduce the impact of a preventable disease that continues to weigh heavily on the health of East Sumba's populations.



Le rapport complet du East Sumba Malaria Prevention Program est [disponible en téléchargement](#) et présente en détail le contexte, les actions menées et l'approche mise en œuvre sur le terrain.



# E1 - THE SOLARBUBDYY PROGRAMME

<https://fairfuturefoundation.org/program-solar-buddy/>



In 2025, Fair Future Foundation distributed **2,248** SolarBuddy lamps to **28 schools** in East Sumba without electricity.

These included **2,224 SolarBuddy Junior** lamps for children and **24 SolarBuddy Student** lamps for classrooms and teachers. These schools, like the surrounding villages, still lack access to energy, which affects education, safety, and daily life.

The arrival of these lamps was the culmination of exceptional logistical and administrative work.

**For over three months**, our teams navigated a complex import process involving numerous Indonesian authorities to secure a full exemption from taxes and fees for humanitarian imports. This is the **first such exemption for any NGO, local or international**, in Indonesia. Without this official recognition, the distribution of these lamps would not have been possible.

On the ground, the impact is immediate. Children can **study**, do their homework, **read**, and **write**. Families can **cook** and move around with a safe light source. Children and their loved ones are **protected from the toxic fumes** of kerosene lamps, which cause numerous respiratory problems. For some, the light simply allows them to fall asleep without fear—a seemingly small detail, but essential.

This programme marks the beginning of a long-term commitment. More than 100 schools and as many villages remain without electricity in the region ([see this Google Map here](#)). The need is immense, and the work is far from over.

We extend our sincere thanks to the [SolarBuddy Foundation](#), [Rotary Australia](#), [Kawan Baik Indonesia](#), and all the volunteers who made this operation possible in 2025. In 2026, **another 3,000 lamps** are expected to arrive, continuing this vital momentum.



*SolarBuddy Project Report 2025: [Discover the full project report](#)*

*SolarBuddy Distribution Report 2025: [Explore the distribution report](#)*





# F1 - ACCESS TO ELECTRICITY FOR SCHOOLS

<https://fairfuturefoundation.org/solar-electrification-sdn-mbajik/>



In 2025, Fair Future Foundation completed one of its most significant projects: **the electrification of the SDN Mbajik school** and part of the surrounding small hamlet in East Sumba.

This extremely isolated location, accessible only after a six-hour journey, including four hours on rough tracks, had never before been served by electricity. This project was made possible through close collaboration with Smart Energy Technology, a committed technical partner working alongside us in Indonesia.

Together, we **designed and installed** a solar solution tailored to an environment without grid access, infrastructure, or reliable road access.

For the school's 80 students, electricity now means well-lit classrooms, improved learning conditions, and access to new teaching tools.

The project required nearly **two months of planning** and an **eight-person** team on site for **eight consecutive days** under challenging conditions. The complete installation, including solar panels, wiring, inverters, and batteries, represents an investment of approximately **15,000 Swiss francs**.

This project would not have been possible without the support of **private donors** and the crucial contribution of Smart Energy Technology, which provided much of the equipment at cost, without any profit, including a specialised technician (*Tony*), the solar panels, all the wiring, tools, inverters, and a 5,000-watt lithium battery.

The arrival of electricity also prompted an **awareness campaign** among the local community. Electricity brings opportunities, but also **responsibilities**. Its use was **explained, guided, and discussed** with the residents.

On the evening of its commissioning, a simple moment made a lasting impression. Using a projector and an improvised screen, the residents **watched a film for the first time** in their lives. A new light, both literally and figuratively.



Découvrez cette aventure à travers le film documentaire que nous avons réalisé.





# G1 - TRUCK OF LIFE & TRUCK N'LOAD



<https://fairfuturefoundation.org/category/emergencies/truck-and-load/>



The **Truck n'Load** has become a discreet but essential pillar of our logistics.

This truck, while not a 4x4, allows us to go **almost anywhere safely** and, above all, significantly reduces costs by enabling us to locate external vehicles. It is in constant use.

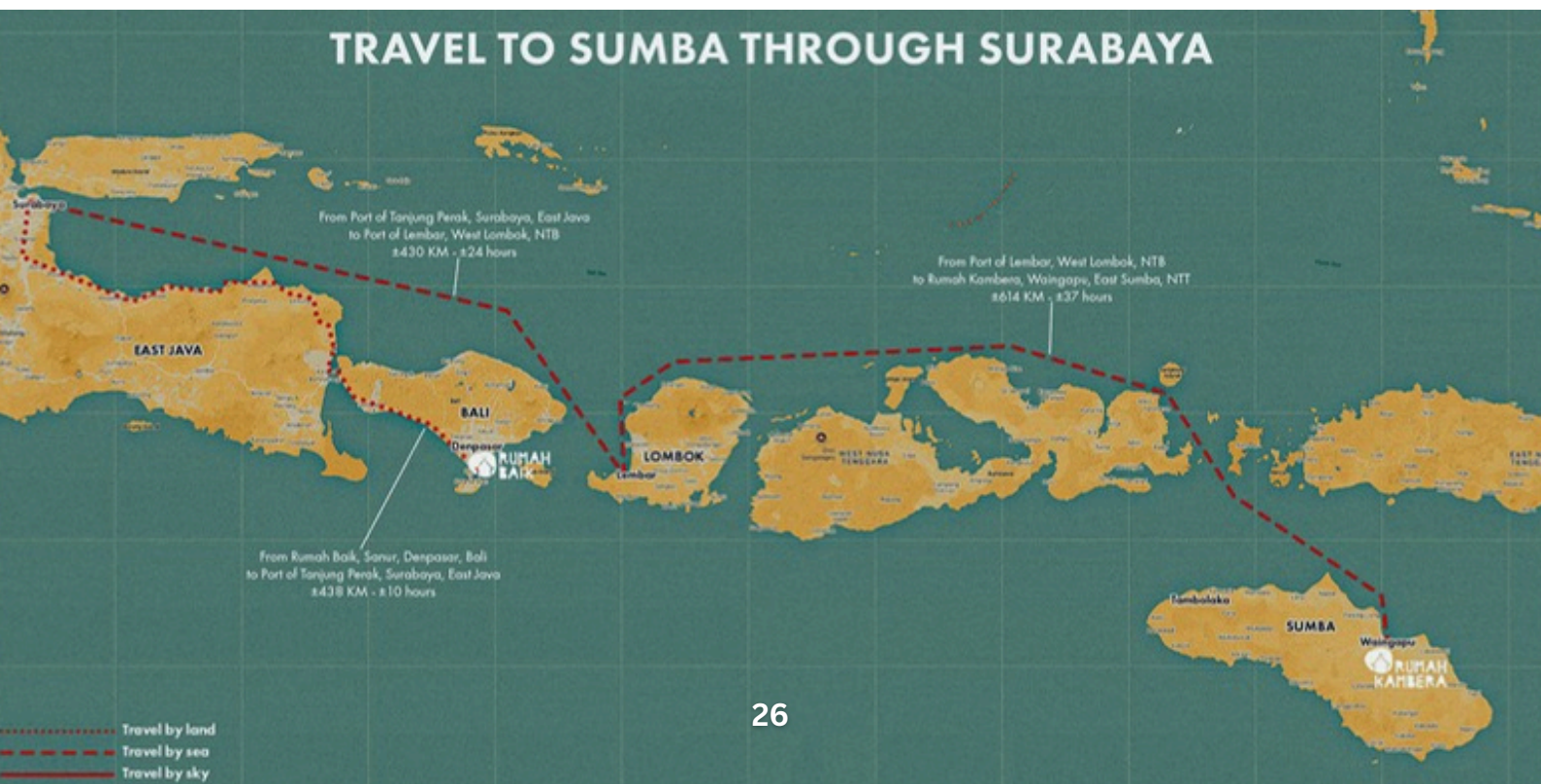
It handles the long logistical routes between **Surabaya, Denpasar, and Waingapu**, journeys that often last several days, or even nearly a week.

This truck transported the **2,248 SolarBuddy lamps** from Surabaya to Sumba, along with the tools, medical equipment, supplies, and materials needed for our projects. In the field, it also transports our teams and, at times, transforms into a veritable mobile workshop.

Equipped with a **5,000-litre water tank**, the Truck n'Load plays a key role in ferrocement construction work. During the construction of the 114.5 m<sup>3</sup> reservoir in Laindatang, it was **essential** to ensure a water supply in an area without a network, a water source, or road access.

**Without this truck**, many of our projects would be slower, more expensive, or even impossible. The Truck n'Load is silent, but it makes every project possible.

A **huge thank you** to everyone who made its acquisition possible.



# G2 - TRUCK OF LIFE & TRUCK N'LOAD



<https://fairfuturefoundation.org/category/emergencies/truck-of-life/>



The Truck of Life plays a central role in our medical and social work. Serving as both a logistical tool and a mobile clinic, it is primarily dedicated to providing care.

It transports medications, medical equipment, and field teams, enabling us to deliver care where no other means are available.

Unlike the Truck n'Load, **the Truck of Life is a true all-terrain vehicle.**

It goes where almost nothing else can. It ventures along dirt tracks, crosses inaccessible areas, and reaches the most isolated people. It is a key component of the Primary Medical Care programme, enabling healthcare agents and medical teams to provide direct assistance to populations with no access to healthcare.

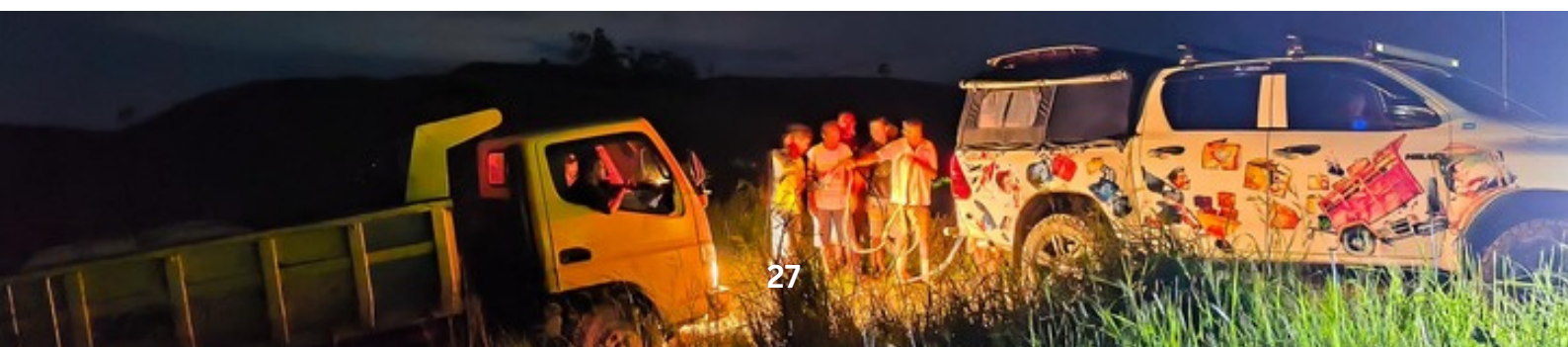
The Truck of Life also **handles numerous logistical routes** between Surabaya, Denpasar, and Sumba, but its primary mission remains humanitarian. It is almost always present during our operations: providing medical care, responding to emergencies, conducting mobile programmes, distributing supplies, or offering ad hoc support to other projects when access is particularly difficult.

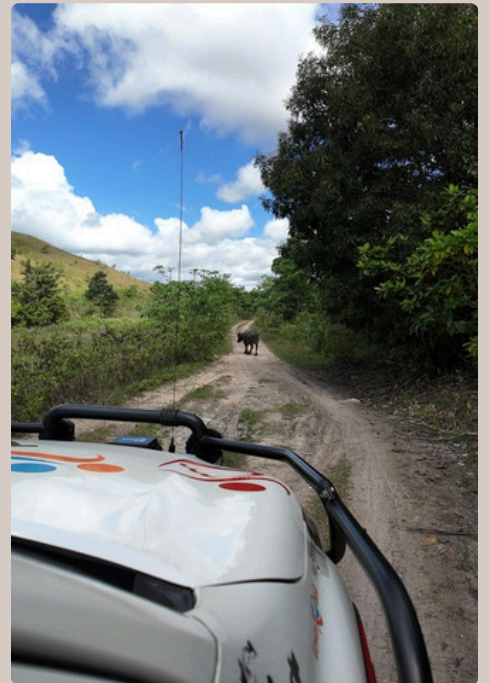
**In 2025, this heavily used vehicle** sustained significant damage due to exceptionally harsh terrain. Thanks to donor support, we were able to replace **two shock absorbers and two rims** at a cost of approximately **2,500 Swiss francs**. These repairs are frequent, unavoidable, but essential to ensure continuity of care.

The Truck of Life operates in sometimes appalling conditions. Without it, many medical procedures **would be impossible**. It is a discreet, reliable, but vital vehicle. A huge thank you to all those who, year after year, ensure it continues to serve the most vulnerable.



*Vous pouvez supporter les camions de la fondation, en donnant pour des kilomètres*







# H1 - COMMUNITY EMPOWERMENT

<https://fairfuturefoundation.org/programs-empowerment/>



In 2025, **community empowerment** remained at the heart of Fair Future Foundation's work.

Our approach is simple: we don't act in place of communities; we work with them to empower them to take charge of their own health and future.

The "Kawan Sehat" community health workers play a central role in this dynamic. Through ongoing training and support, they visit thousands of families each year.

Our **educational materials**, including posters and fabric displays covering ten themes, convey clear messages about health, **hygiene, nutrition, physical activity**, and disease prevention.

In 2025, **three major new campaigns were launched**: tobacco control, alcohol prevention, and waste management. These initiatives strengthen families' ability to understand risks and adopt healthier behaviours.

**Empowerment extends beyond health.** Communities actively participate in all our projects—building reservoirs, electrifying schools, and improving access to water and healthcare. We provide **technical** and **organisational** support, but residents build, learn, and maintain the infrastructure. When specific skills are needed, specialists step in to **share their knowledge**, ensuring a sustainable transfer of skills.

The eight reservoirs in Hambarita, the 114.5 m<sup>3</sup> reservoir in Laindatang, the solar installations, and the medical programmes all exemplify this approach. Each project becomes a **space for collective learning**; this is truly the common thread running through all our actions.

Community empowerment is not an abstract concept. It is measured by the capacity of families to act, **decide**, and **build** for themselves. This is how our actions take root and endure beyond our involvement.



*Partagez vos idées, vos propositions et vos solutions.*

[Cliquez ici pour contribuer.](#)







# 11 - PREVENTION AND HEALTH EDUCATION

<https://fairfuturefoundation.org/programs-empowerment/>



In 2025, prevention and health education were at the heart of our work.

As part of our infectious disease research and prevention programs, we continued field studies, **strengthened screening efforts**, and implemented strategies tailored to the realities of the most vulnerable villages.

But fighting disease is not enough; we must also change behaviours.

We designed and distributed **four new public health posters**, which are now used by Kawan Sehat agents in dozens of villages. ([See all our campaigns here](#))

- One poster addresses the dangers of **active and passive smoking**.
- Another discusses the health and social impact of **excessive alcohol consumption**.
- A third addresses **waste management and its direct impacts** on water, infections, and the environment.
- Finally, in response to the **alarming increase in HIV cases** in eastern Indonesia, we created a clear, direct poster **encouraging early testing**.

These tools are not merely decorative. They are explained, discussed, and shared during home visits, community meetings, and in schools.

In parallel, we **have strengthened training** for Kawan Sehat agents, particularly in microscopy for accurate malaria diagnosis, to improve the quality of analyses at the local level. Large prevention billboards have been installed in several strategic locations to reach a wider audience beyond isolated villages.

**Prevention comes through understanding and dialogue.** In 2025, we have chosen to tackle the disease at its root, through information, responsibility, and collective action.



We are working very hard on these programs.





# KNOW YOUR STATUS, TAKE AN HIV TEST NOW!

**WHAT IS HIV?** HIV is a virus that weakens the human immune system

### EARLY INFECTION STAGE

Fever  
Headache  
Night Sweats

### CHRONIC HIV STAGE

Often asymptomatic for years

### HIV IS TRANSMITTED THROUGH

Sex without contraception  
Blood contact/ sharing needles  
From pregnant mother to unborn baby

### HIV IS NOT TRANSMITTED THROUGH

Mosquito - Food - Holding Hands - Kiss

### REDUCE THE RISK OF CONTRACTING HIV BY



Using condoms



Make sure your partners who are living with HIV are taking treatment



Using PrEP to prevent getting HIV if you have ongoing risk, including during pregnancy



Use a sterile needles and syringes for each injection



Get tested and treated immediately for sexually transmitted diseases

If you think you're at risk, get tested immediately! If you're positive, there's a cure! You can live a healthy life and protect your loved ones.



**TO TAKE A TEST OR FOR MORE INFORMATION, CONTACT: NEAREST PUBLIC HEALTH CENTER**



## MY WASTE, IS MY RESPONSIBILITY!

### What is Waste?

All used goods or those that are no longer wanted by their owners because they no longer have any use or function.

### Different Types of Waste

Sort your waste according to its type so that it can be easily recycled and managed properly to minimize pollution to the environment.



#### Organic

Waste that is easier to decompose and rot, and tends to be easier to recycle.



#### Non-Organic

Waste that is difficult to rot and decompose, some of it even takes tens to hundreds of years.

### Pollution Impact Non-Organic Waste

#### Air

- Air pollution
- The smoke from burning trash irritates the senses and throat and increases the risk of asthma, heart disease and cancer
- Worsening climate change

#### Water

- Polluting water sources
- Causes various skin diseases, can even trigger scabies and skin cancer
- Causes diarrhea, poisoning and even intestinal cancer

#### Land

- Reduces soil fertility and can cause flooding
- Dangerous if eaten by livestock
- Triggers the development of bacteria, viruses and parasites that trigger the development of diseases



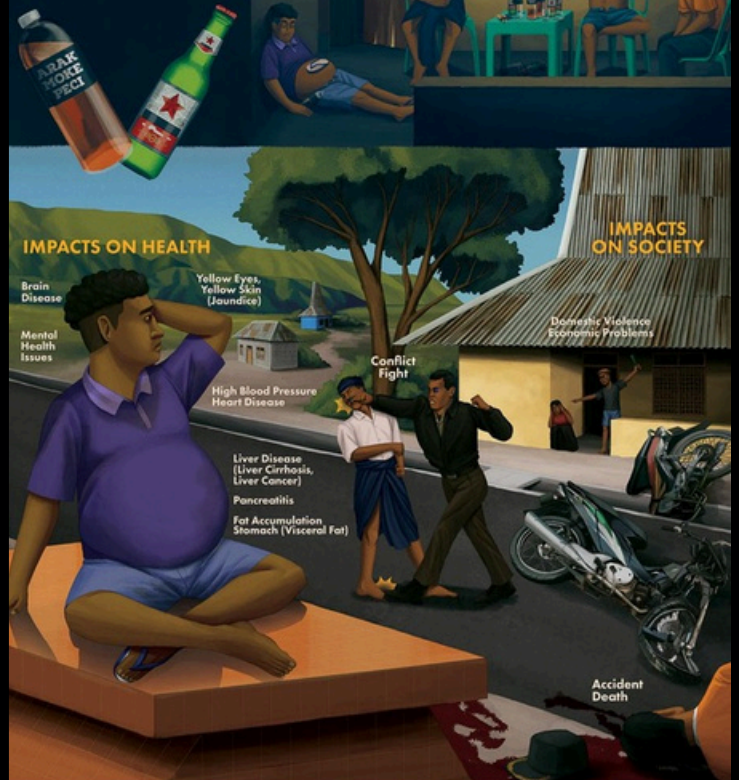
## CIGARETTES KILL YOU, AND YOUR FAMILY!



SMOKING CAN CAUSE CANCER, HEART ATTACKS, IMPOTENCE, AND PREGNANCY AND FETAL DISORDERS IN ACTIVE AND PASSIVE SMOKERS.



## THE IMPACT OF EXCESSIVE ALCOHOL CONSUMPTION





# J2 - KAWAN SEHAT HEALTH AGENTS

<https://fairfuturefoundation.org/program-kawan-sehat-agents/>



**Ninety-five per cent of Kawan Sehat's community health workers are women** from extremely remote villages where access to healthcare is virtually non-existent.

Four years ago, they knew nothing about medicine. Today, they are the pillars of their community's healthcare system.

Recruited locally, they receive intensive training each year and are supervised by our medical team.

They are equipped with a complete medical backpack, a pharmacy stocked with supplies for the most common illnesses, and, since 2025, antibiotics administered according to strict protocols.

**They consult, treat, refer, and explain.** Together, they care for nearly 1,000 patients a month. These are not miracles; they are the result of a structured, rigorous system built around them.

Each case is recorded in the Kawan Sehat application we developed. The data are analysed, shared with health authorities, and transmitted monthly to regional healthcare centres. Field coordinators visit them regularly, replenish supplies, check prescriptions, and ensure clinical follow-up.

In areas where a **simple infection** can progress to septicemia without early treatment, their presence makes all the difference. They prevent, screen, treat promptly, and educate families to recognise warning signs. They are recognised by the government, respected by their peers, and supported by their villages.

**This programme saves lives.** It is trained, organised, and determined women who are driving this lasting transformation to the very heart of the most isolated communities.



*[Click on this link to discover real cases handled by Kawan Sehat health workers in 2024, with photos documented by themselves in the field.](#)*







These portraits are just a fragment of reality. In 2025, our Kawan Sehat Health Agents worked tirelessly, often in extreme conditions, to treat, prevent, and support.

Behind each face lie hundreds of consultations, miles walked, and lives stabilised in time. These images are a simple tribute to their daily commitment.



# J2 - THE KAWAN SEHAT HEALTH MANUAL

<https://fairfuturefoundation.org/program-kawan-sehat-agents/>



In 2025, we undertook a major overhaul of the "Kawan Sehat" health worker training manual.

Updated as needed, this booklet serves as the technical and methodological basis for the Primary Medical Care programme.

This new edition has been significantly improved in both content and format: enriched content, clarified protocols, redesigned illustrations, and a modernised visual structure to facilitate its use in the field.

Written in Bahasa Indonesia, the manual is specifically **adapted to the realities** of ultra-rural areas where there are no doctors, no medical centres, and no immediate access to healthcare.

This is not an academic work but a **practical tool designed** for women in their communities who lack prior medical training.

**The content covers the management of common infections**, wound care, basic emergency care, hygiene, nutrition, infectious disease prevention, recognition of warning signs, antibiotic therapy protocols, and referral procedures to healthcare facilities when necessary. Each chapter addresses real-life situations encountered in villages.

Developed by Fair Future Foundation and Kawan Baik Indonesia, drawing on **over 15 years of field experience**, this manual ensures harmonised, safe practice that complies with public health standards. It supports community health workers in their daily work, **strengthens** their autonomy, and **establishes** a genuine local healthcare system where none previously existed.

In an environment marked by isolation and poverty, this book is much more than a teaching aid: it is the backbone of the programme.

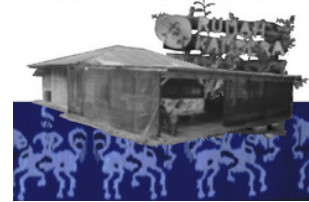


[Click here to discover all our publications and manuals developed for field use.](#)



# K1 - RUMAH KAMBERA

<https://fairfuturefoundation.org/program-rumah-kamera/>



Since 2019, Rumah Kamera has been our base in East Sumba.

It's where we live, work, store supplies, train, repair, and plan.

It's where medicines, solar panels, pumps, tools, SolarBuddy lamps, and Kawan Sehat medical bags pass through. It's where it all begins.

In 2025, Rumah Kamera remained a welcoming place. Rotary International teams visited twice. **Partners, volunteers, and visitors** travelled difficult roads to reach us, carry supplies, deliver donations, and learn about our work.


**Yet we are not in a tourist region. We are in a rural, isolated area, far from everything.**

**But the building itself is falling apart.** The roofs leak, the walls are crumbling, and the space has become too small for our activities. This place, which has given us so much, no longer meets the logistical and medical requirements of a growing programme.

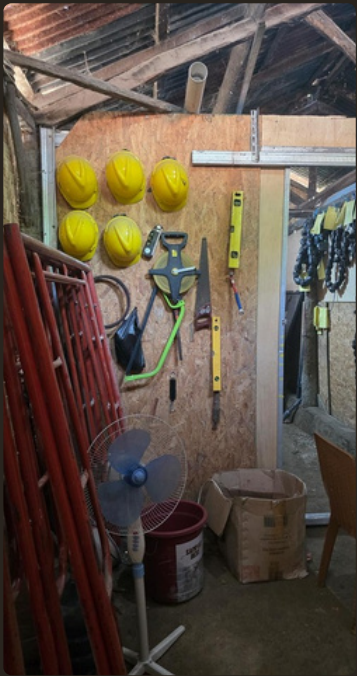
**In 2025, we therefore made a major decision:** to acquire land and build a new medical and social centre. A place designed to last. It will include a pharmacy, a treatment centre, the foundation's headquarters, technical workshops, secure storage areas, a kitchen, a garden, and a room dedicated to training health workers and health education programmes.

Rumah Kamera in 2025 will likely **have reached its final year** in its current form. If we raise the necessary funds, construction will begin soon. Otherwise, the future will become uncertain.

**This decision marks a turning point.** Not an end, but a logical evolution to continue working seriously and sustainably in service to the communities of East Sumba.

 [Rumah Kamera? Where is it?](#)  
[Share your opinion about it](#)





# SOME TESTIMONIALS



## **Aldo Katanga Andung, 10 years old – 3rd grade**

SD Katolik Lindi Pingu

“My name is Rossi, and I am 8 years old. At home, we don’t have electricity. In the evenings and early mornings, I have to walk to fetch water, and it is often very dark.

Now, I have a solar lamp. It helps me see the way and not fall. I can also do my homework in the evening without straining my eyes. This is the first time I’ve had a lamp like this. I am very happy. Thank you very much.”

## **Yosef Katanga Rangga Ndima**

Kawan Sehat Health Agent in Lahiru

“My name is Yosef Katanga Rangga Ndima, a health agent in Kawan Sehat, Lahiru. My wife, Sarlota, and I provide primary healthcare in our village, which is about 14 kilometres from the nearest health centre. The road is almost impassable. Often, we have to walk.

I give advice, treat wounds, fevers, and minor infections, and monitor patients’ progress. When a case is beyond my expertise, I contact the coordination team. If necessary, I arrange transportation to the health centre. There are no specialists here. We do what we can, diligently.

I’ve noticed that people are seeking medical help earlier. Illnesses are less severe. For me, helping my community is both a responsibility and a joy.”



# SOME TESTIMONIALS



## Testimonial from John Kevan

Rotary International – Rotary Australia – Laboratory Without Walls

“I have been working with the Fair Future Foundation for three years.

In 2025, I visited Sumba twice with our Rotary teams. In total, we have been there four times to assess, adjust, and strengthen initiatives underway.

I get straight to the point. I support robust programmes focused on infectious diseases and Primary Medical Care. Work on malaria, training of community health workers, and access to essential treatments are structured and measurable.

Kawan Sehat community health agents care for hundreds of patients each month. Data are tracked, supplies are monitored, and cases are reported to local health authorities. It’s a system that works.

Rotary International, Laboratory Without Walls, and our teams helped initiate and structure these operations. We are now preparing a new phase focusing on septic conditions, a critical issue in these remote areas.

I support Fair Future because its approach is rigorous, responsible, and geared towards concrete results.”



# SOME TESTIMONIALS



## Testimony of Katrina, Kawan Sehat Health Agent

Lapinu Village, East Sumba

My name is Katrina Konda Ngguna. I live in Lapinu, a small village with no roads, no vehicles, and no health centre. Here, when someone is ill, they must walk a long way. Sometimes for hours. Many people didn't go.

I have been a health worker with Kawan Sehat for almost four years now. At first, I knew nothing about medical care.

Today, I care for between 50 to 70 patients a month. I treat wounds, fevers, and minor infections.

I give medication, but also advice. I use fabric posters to explain hygiene, nutrition, disinfection, and the dangers of alcohol and tobacco.

The most important thing is not just to treat the illness, but to prevent its progression.

A clean wound shouldn't become a serious infection. An infection treated promptly shouldn't lead to sepsis. We see the difference.

*"Actually, I feel useful," says Katrina. "I feel respected."*

In my village, people call on me for advice. Being a woman here used to mean staying in the background. Now I participate in decisions, speak in front of families, and share knowledge.

I'm not just Katrina anymore. I'm a caregiver for my community. And that changes everything.



Would you like to [help the Primary Medical Care Program and thus help Katrina?](#)



# SOME TESTIMONIALS



## Testimony of Rambu Kaita Lapid

Hambarita Village, East Sumba

My name is Rambu Kaita Lapid. I live in Hambarita, in a very isolated house. Previously, I had no water near my home. To find it, I had to walk three to four kilometres. Water was scarce, heavy to carry, and each trip took hours.

In 2025, a 5,300-litre tank was built three metres from my house as part of the Water Connection project. It is filled with filtered rainwater. This is the first time we have had water here.

Today, I can cook, drink, and wash more often. About fifteen of us benefit from it. The children no longer spend their days looking for water. They can go to school. We are less tired. We live better.

This reservoir, like the nine others built this year in Hambarita, has changed our daily lives.



# SOME TESTIMONIALS

---



## Testimony of Rambu Agnensia Samma Djala, A.Md.Kes

Puskesmas Nggoa

My name is Agnensia Samma Djala, and I work as an analyst at the Puskesmas Nggoa laboratory. In our region, malaria remains a daily reality. We see patients with fever, chills, and anaemia. But confirming a diagnosis requires more than intuition. It requires a microscope, appropriate equipment, and solid knowledge.

The microscopy training programme, implemented over several months as part of the fight against infectious diseases, was essential for us. We reviewed in detail the identification of different types of Plasmodium, the proper preparation of slides, the accurate reading of blood smears, and the diagnostic criteria.

We often lack equipment, and theoretical updates are rare. This training allowed us to refresh our knowledge and improve the quality of our analyses. Earlier detection means faster treatment, and here it can truly save lives.



# SOME TESTIMONIALS

---



## Collective Testimony – Mbajik School, Mahu

We are the children, teachers, and families of Mbajik School. For a long time, our evenings ended with sunset. After 6 p.m., everything went dark. We learned little, struggled to write, and relied on a kerosene lamp for light.

Today, for the first time, we have electricity. The classrooms are lit. The teachers can prepare lessons in the evening. The children can read, write, and review without straining their eyes or breathing in smoke.

Light changes the way we learn. It gives us time, calm, and concentration. It also lets us charge our phones to stay in touch with the outside world, call in an emergency, and ask for help if someone falls ill. Here, access to healthcare is distant and difficult. Being able to communicate can make all the difference.

We are about 80 students, surrounded by our teachers and families. Together, we represent an entire village illuminated. It's not just about electricity. It's about greater safety, more opportunities, and greater dignity.

This past week with you will remain etched in our memories. The light has arrived, and with it, a new beginning for Mbajik.



# SOME TESTIMONIALS



## Testimonial – Malaria Prevention Day, Umalulu

Umbu Hina djangga kadu.

“I’ve already had malaria. Almost everyone here has. Some people I know have died from it. We know it’s dangerous, but we often don’t know how to protect ourselves.

During the malaria prevention training you conducted in my village, I clearly understood the symptoms, the warning signs, and, most importantly, how to prevent the disease at home.

I’m going to hang the two posters I received, on symptoms and prevention, in my house. I can show them to my family and neighbours.

The mosquito nets, the explanations, and the discussions during these days were very important to me. Now I feel better prepared. I know what to do, when to seek medical help, and how to protect my children.

What you’ve done here doesn’t end with this day. It will help us for a long time. Thank you so much.”



# OUTLOOK 2026

<https://fairfuturefoundation.org/>

#SupportThem



## 2026 will be a pivotal year.

**Our top priority remains the Primary Medical Care program.** We are currently recruiting new Kawan Sehat Health Agents to expand medical coverage in areas with limited access to doctors, reliable roads, and transportation. More agents mean more consultations, earlier diagnoses, and fewer serious complications. Securing sustainable funding for this program is vital.

**Our second major focus** is our new medical and social centre in Rumah Kampera. The land has now been acquired. We must now build. Construction must begin no later than April 2026 to ensure a move-in before October. This centre will house a pharmacy, a small clinic, a small laboratory, a training room, logistics storage, field coordination, and technical workshops. It will centralise all of our operations.

In 2026, we also plan to build **12 new rainwater harvesting tanks**, each with a capacity of 5,300 litres, at a unit cost of CHF 2,245. These installations will significantly improve the lives of families without access to household water. We are actively seeking donations and partners to finance these simple, tangible, and immediately useful infrastructure projects.

**Prevention will remain a cornerstone:** malaria, septicemia, HIV, vaccination, infectious diseases, health, and climate change. The educational materials developed in 2025 will be widely disseminated.

**Finally, 2026 should be the year we obtain ZEW0 certification.** The process is well underway. We still need to strengthen our governance by adding two new members to the foundation board. This certification will enhance our transparency and reinforce our partners' trust.

**Our goal is clear: to structure, expand, and secure our impact.**



*If you would like to fund a 5,350-liter tank and provide a family with sustainable access to clean water, [download the project document here](#).*



# THANK YOU ALL

<https://fairfuturefoundation.org/partners-friends-fairfuture/>

For nearly 18 years, our work has stood on trust. We sincerely thank every private donor, every anonymous supporter, and every company and foundation listed below.

Your commitment allows us to treat patients, build water systems, train health agents, and bring light where there is none.

What we achieve in the field is possible because you stand with us, year after year.



On behalf of the entire Fair Future family, thank you for your trust and loyalty.

In 2025, thanks to you, we will have provided care, delivered training, built resources, distributed supplies, and offered support. Behind every action are faces, children learning, mothers breathing easier, and villages finally gaining access to water and electricity.

Your commitment makes these results possible. It transforms urgent needs into concrete, sustainable, and measurable solutions.

## Board of the Fair Future Foundation

Maxime Capelli  
Chloé Dubrit  
Michèle Rey  
Alexandre Wettstein  
Elisa Wettstein



hello@fairfuturefoundation.org  
<https://fairfuturefoundation.org>



Make a donation with Twint®

